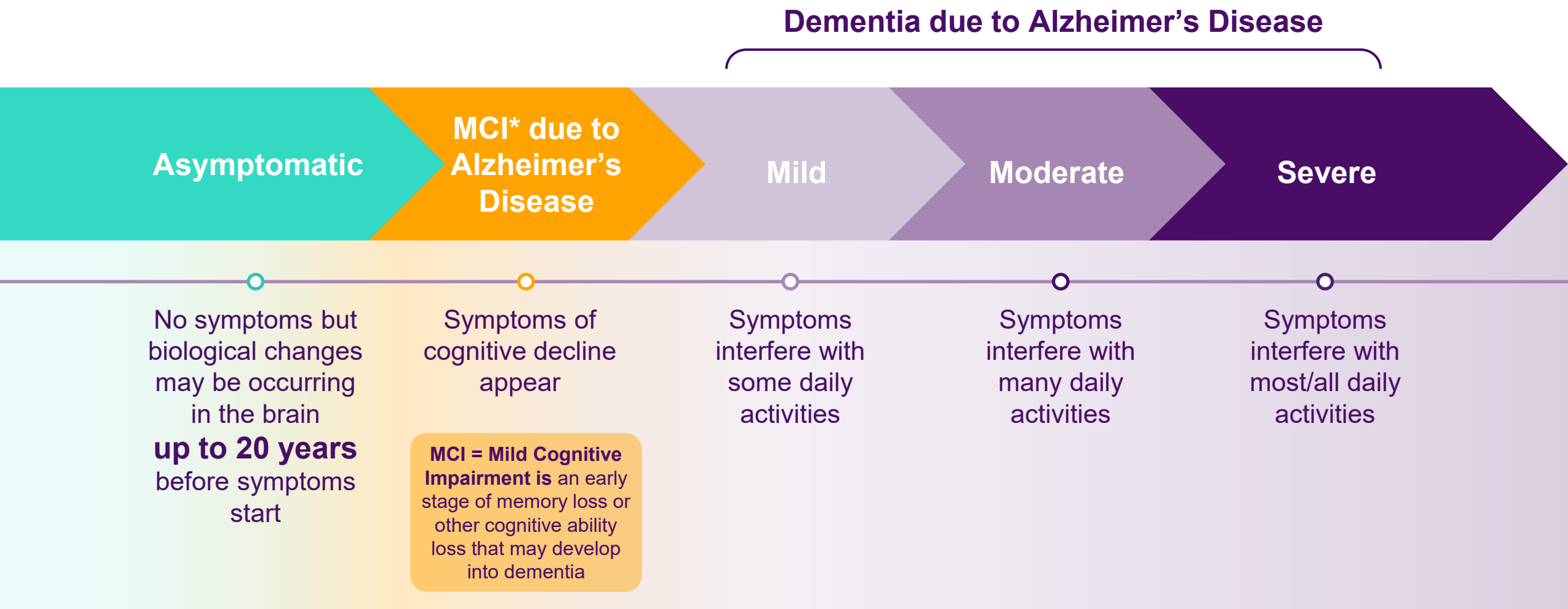




Benefits of Early Alzheimer's Diagnosis and Current Treatment Options

Meggie Gaskins
Director of Communications
Alzheimer's Association Oklahoma Chapter

Alzheimer's Disease is a Continuum



Benefits of an Early and Accurate Diagnosis



Medical Benefits

- Access to current treatments
- An opportunity to participate in clinical trials
- A chance to prioritize health, including making lifestyle changes



Emotional and Social Benefits

- More time to plan for the future, access resources
- Time to plan end-of-life decisions



Financial Benefits

- Cost savings for families
- Cost savings for the U.S. government

The Cost of Care



- \$663 million in OK Medicaid costs of caring for people with Alzheimer's
- The lifetime total cost of care per person with Alzheimer's is more than twice the estimated lifetime cost for individuals without Alzheimer's.
- Early and accurate diagnosis in the mild cognitive impairment stage (MCI) could save up to 7 trillion dollars in patients' health and long-term care costs by 2050.

FDA-Approved Therapies for Alzheimer's

First
description
of disease
1906



Treat Symptoms:
Cognition and Function

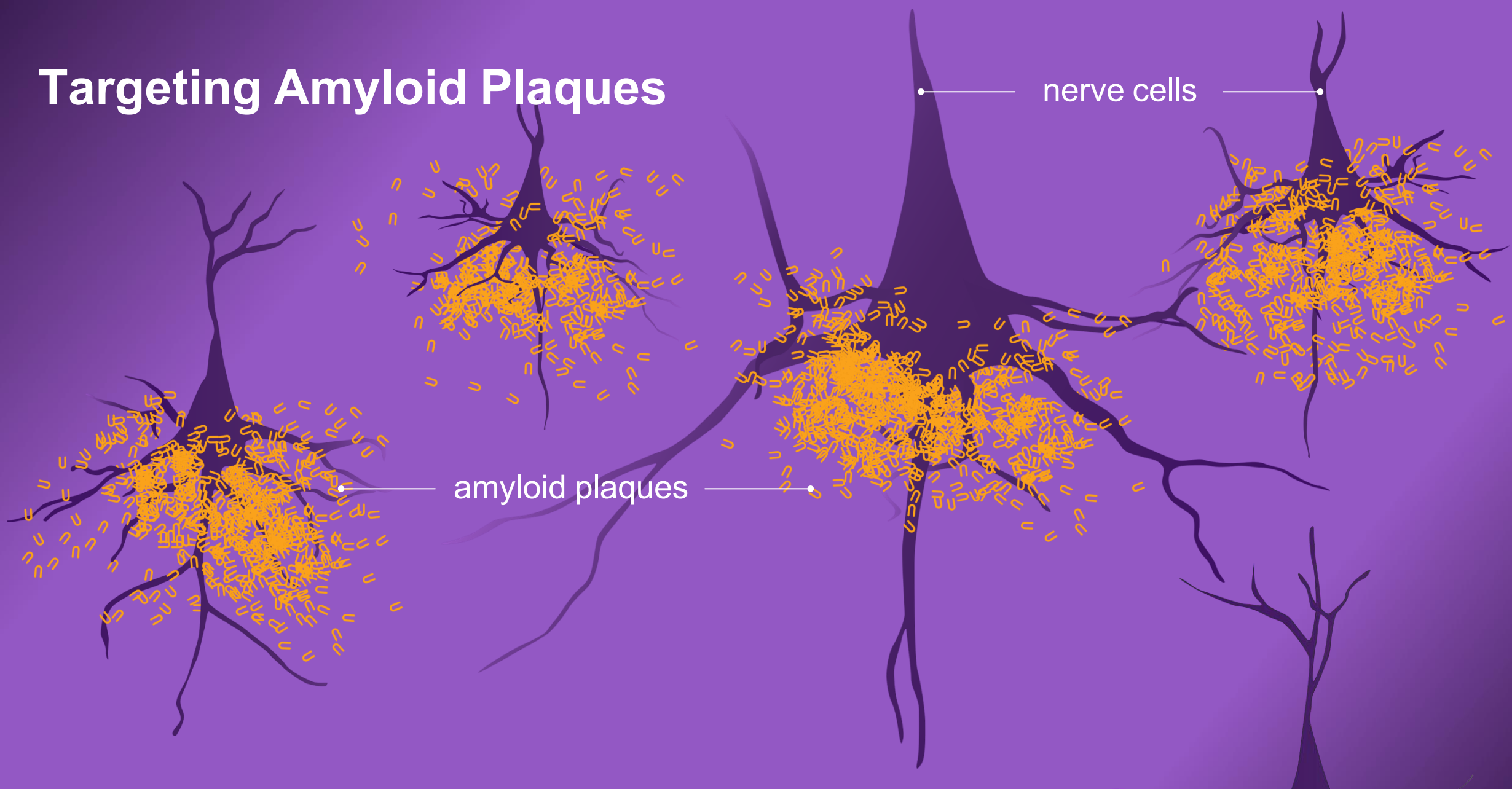
Treat Symptoms:
Mood or Behavior

Slow Disease Progression:
Cognition, Function and Behavior

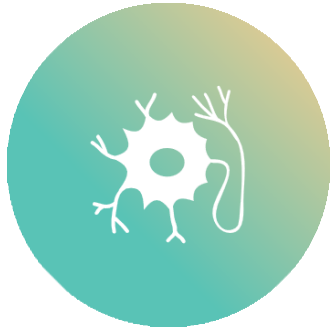
		Asymptomatic	MCI	Mild Dementia	Moderate Dementia	Severe Dementia
1996	donepezil (Aricept)					
2000	rivastigmine (Exelon)					
2001	galantamine (Razadyne)					
2003	memantine (Namenda)					
2014	memantine + donepezil (Namzaric)					
2020	suvorexant* (Belsomra)					
2023	lecanemab (Leqembi)					
2023	brexpiprazole (Rexulti)					
2024	donanemab (Kisunla)					
2024	benzgalantamine (Zunveyl)					

* Suvorexant approved for insomnia not AD but safe and effective in AD population.

Targeting Amyloid Plaques



Anti-Amyloid Monoclonal Antibodies



First treatments to
address the
underlying biology
of Alzheimer's
disease
(Not a cure)



Targets and reduces
amyloid plaques in
the brains of
individuals living with
Alzheimer's disease

Treatment May be Appropriate for People With Both



Mild cognitive
impairment (MCI)
due to Alzheimer's
disease or mild
dementia due to
Alzheimer's disease



Evidence of a
buildup of
amyloid plaques
in the brain

Outcomes Could Include:



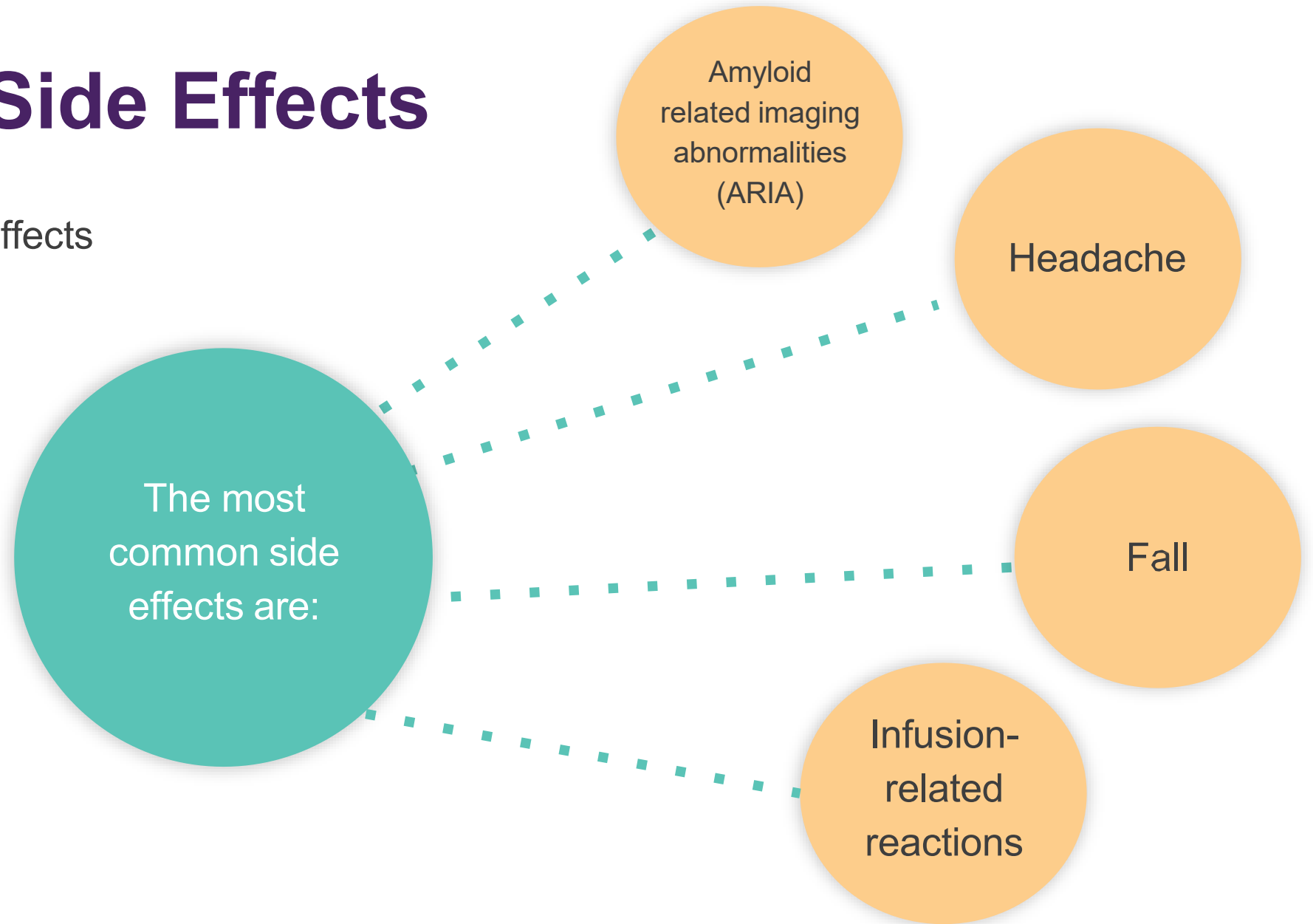
Reduction in cognitive decline
(memory and thinking)

Reduction in functional decline
(activities of daily life, sustained independence)

Individual response to treatments may vary.

Possible Side Effects

All drugs have side effects



How the Treatment is Administered



By IV infusion
(by vein into the
bloodstream)



Leqembi -
every two weeks
Kisunla – every four
weeks



In general, infusion
can be done at:
- Hospitals
- Infusion therapy centers

Recent Updates and Maintenance Protocol



On August 29, 2025, the FDA Approved LEQEMBI IQLIK (pronounced “I Click”) subcutaneous injection for maintenance dosing for the treatment of early Alzheimer’s disease.



After 18 months of Leqembi intravenous (IV) treatment every two weeks, patients may either continue IV infusions once every four weeks or start the new weekly subcutaneous injection using the LEQEMBI IQLIK autoinjector.

How to Access Treatment

- Patients should talk with their doctor to determine if they are a candidate for the treatment. They may be eligible if they have both:

A diagnosis of MCI due to Alzheimer's or mild dementia due to Alzheimer's

Confirmation of amyloid plaques in the brain

- Patients may be referred to a specialist to determine if treatment is appropriate for them.



Real-World Results for New Alzheimer's Drugs Show Effectiveness, Patient Satisfaction



Dozens of abstracts reported at the Alzheimer's Association International Conference in July 2025 showed that real world experience with the drugs Leqembi (lecanemab) and Kisunla (donanemab) produced comparable or better safety to large clinical trials, and patients were satisfied with the results.

Researchers tracked the drugs' safety and effectiveness in patients from a variety of settings including U.S. clinics, memory care centers and international universities. Several of the sites are part of the [Alzheimer's Network for Treatment and Diagnostics \(ALZ-NET\)](#).

Alzheimer's Association Resources



24/7 HELPLINE

1.800.272.3900

- Information and referral
- Care consultation
- Language line allows translation services to support 200+ languages



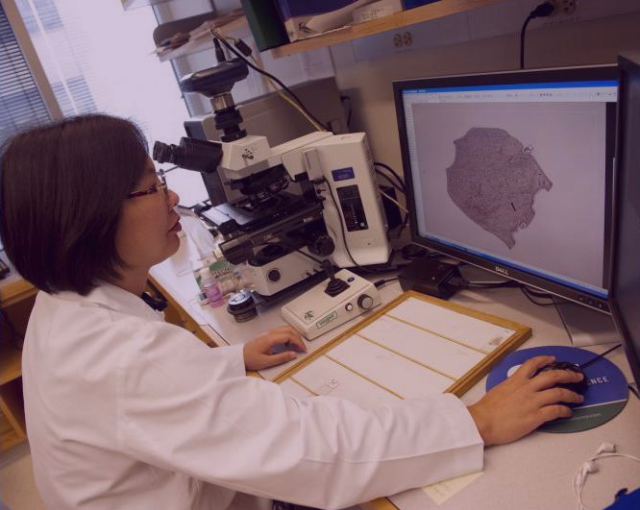
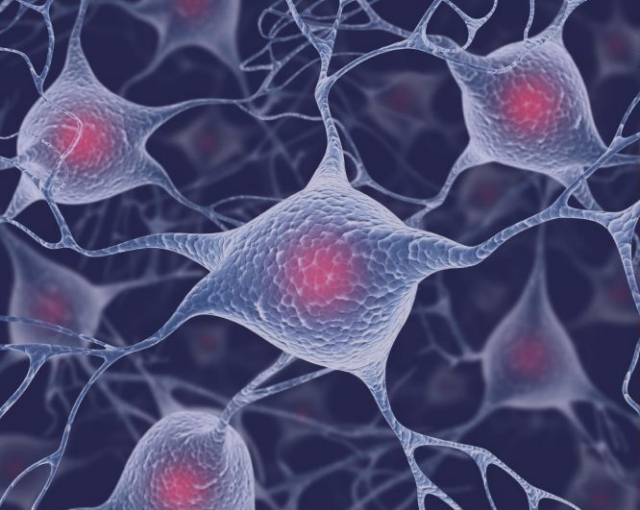
ALZ.ORG

- Information/resources for every stage, in several languages
- Free online education programs, several available in Spanish
- ALZConnected®, online community
- ALZNavigator™, create an action plan
- Alzheimer's Association & AARP Community Resource Finder, find local resources
- alz.org/treatments



IN THE COMMUNITY

- Education programs, support groups and early-stage programs, available in person and virtually.
- Resources available in several languages and for LGBTQ+ communities



Closing Remarks