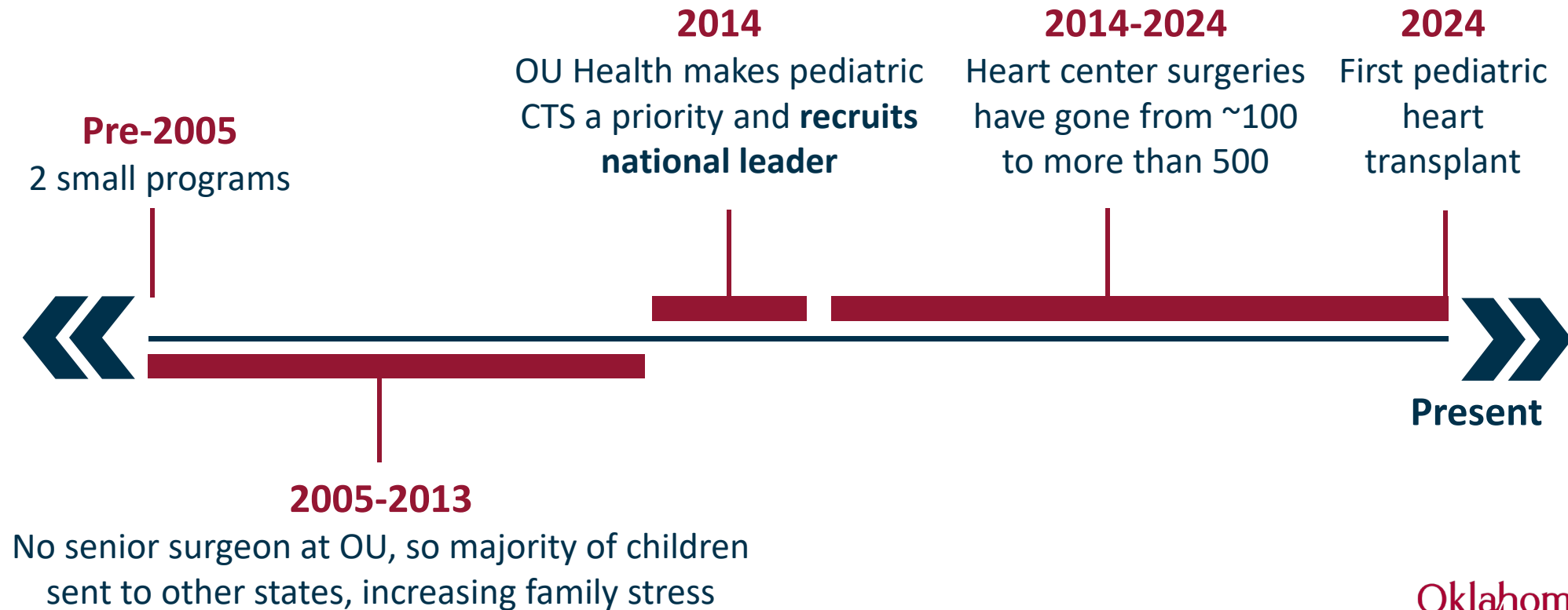




## Oklahoma Children's Hospital Heart Center Project

# History of Pediatric Heart Surgery in OK

Investment generated massive growth in pediatric heart surgeries

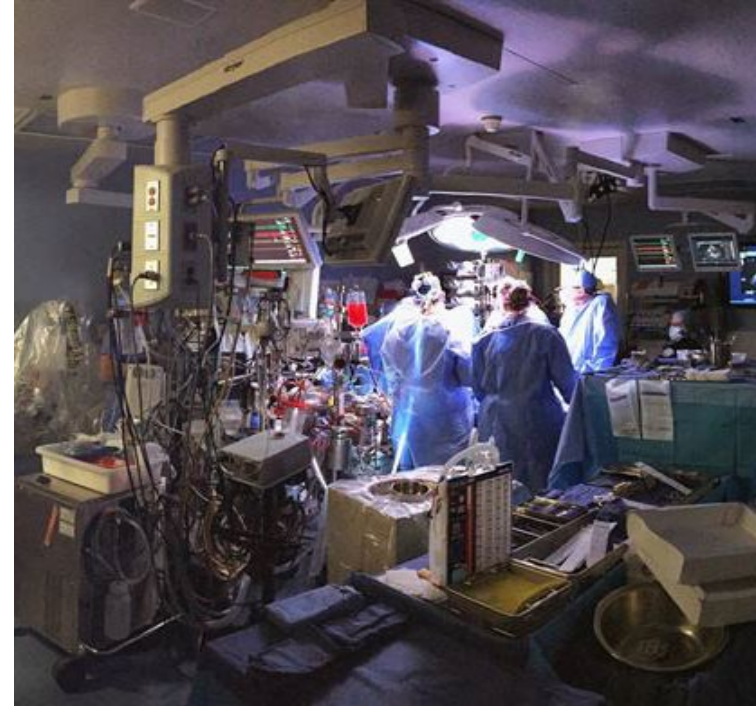


# Children's Heart Center

## Current Status

- 17 pediatric cardiologists
- 9 cardiac ICU doctors
- 3 anesthesiologists
- 9 OR nurses
- 25-bed cardiac ICU
- **Only** pediatric transplant center in Oklahoma

*Note: Surgical program in Tulsa closed*



# Market Growth

Projections indicate a 1.6% increase in inpatient pediatric cardiology discharges over the next decade, mirroring the overall trend of stagnant pediatric population growth. Concurrently, outpatient volumes are anticipated to experience a 6.2% change within the same period.



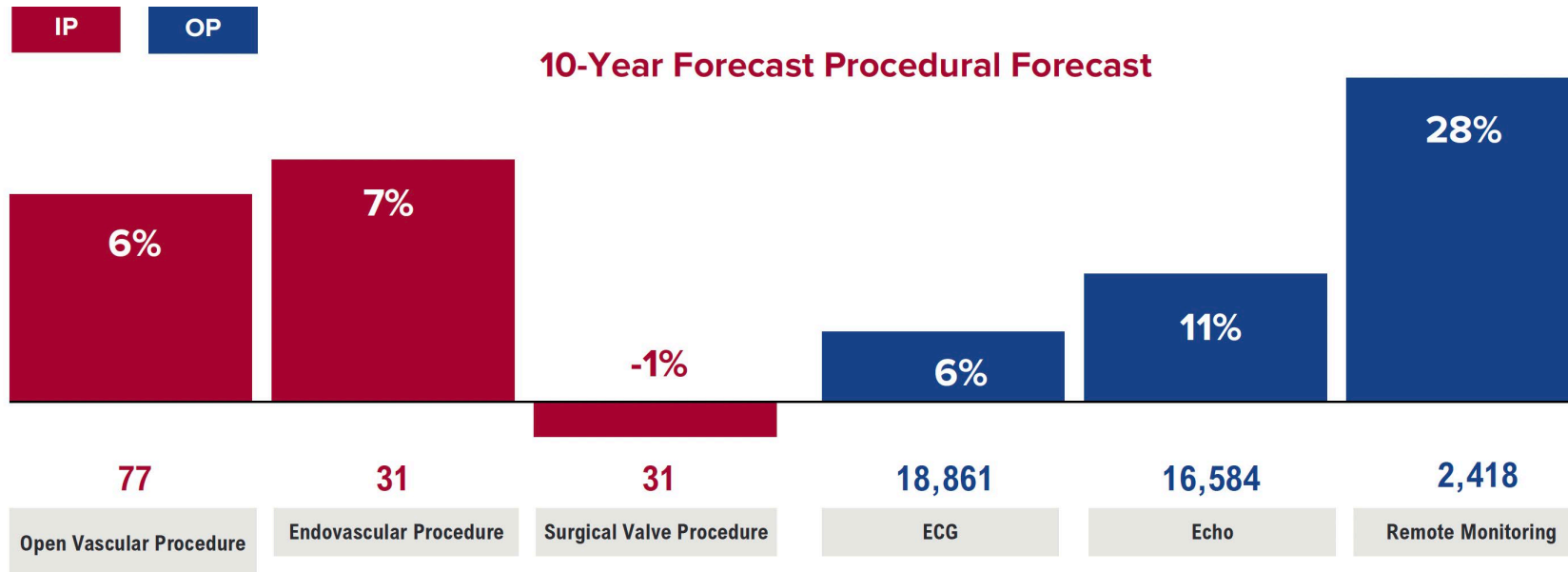
**1.6% (+13)**

Pediatric Cardiology  
Discharges 10 Year Forecast



**3.9%**

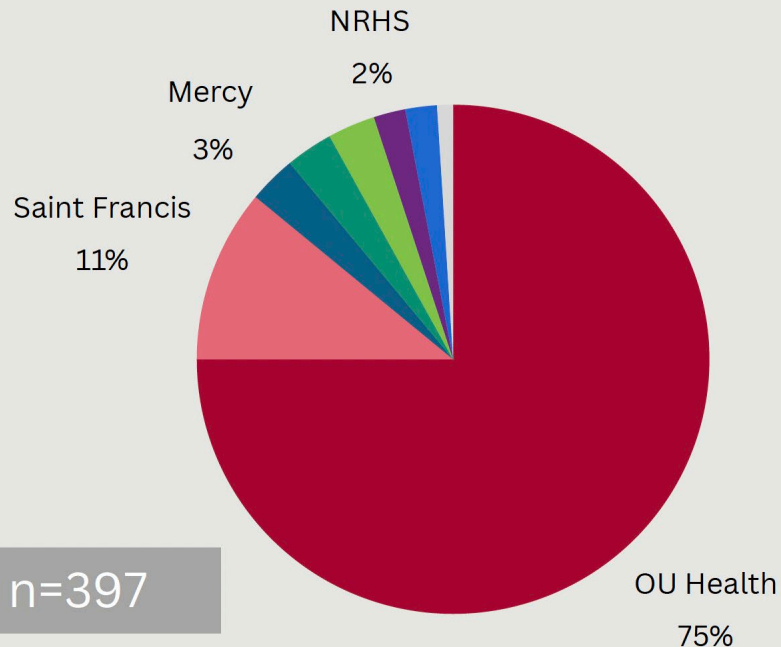
Projected growth of Pediatric  
heart surgical procedures over  
the next ten years.





# Pediatric Heart Market Share

CMI 3.0+ IP Market Share (CY22)



Majority of Oklahoma children who need cardiac care are treated at OU Health.

- 75% of most complex/severe cases
- 60% of inpatient market in state
- 97% of pediatric heart surgery market share

# Pediatric Heart Transplant in Oklahoma

Over the past decade, an average of five Oklahoma children have had to travel out of state for heart transplants every year.

In Feb. 2024, OU Health **received UNOS approval to list our first pediatric heart transplant on the national waiting list.**

Patients can now receive this high level of care within the state.



**3 Oklahoma Children**

are currently on the Pediatric Heart  
Transplant Waiting List

# 1<sup>st</sup> Pediatric Heart Transplant in Decades

10-month-old Parker Helmerich was born with critical pulmonary stenosis, a congenital heart defect. He spent ~300 days in the pediatric cardiac ICU of Oklahoma Children's Hospital awaiting a new heart.

In Oct. 2024, a multidisciplinary team of more than 20 OU Health physicians, nurses and experts successfully completed the transplant.

Parker's parents shared their joy with a simple phrase, **"There's an angel in heaven who left their heart for me."**



# Congenital Heart Disease

More people with congenital heart disease (CHD) are living into adulthood.

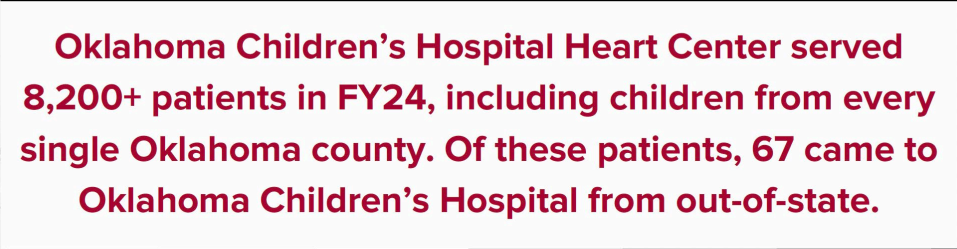
- Adults with CHD outnumber children
- Growing population requires specialized care
- CHD outpatient volumes expected to increase 11% over next decade
- Additional facilities will be needed to ensure quality of life



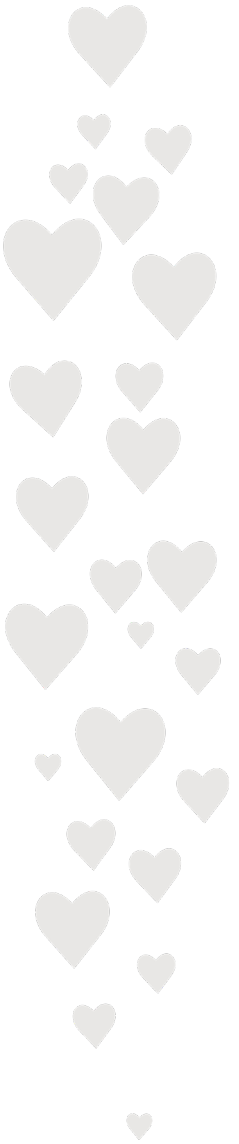
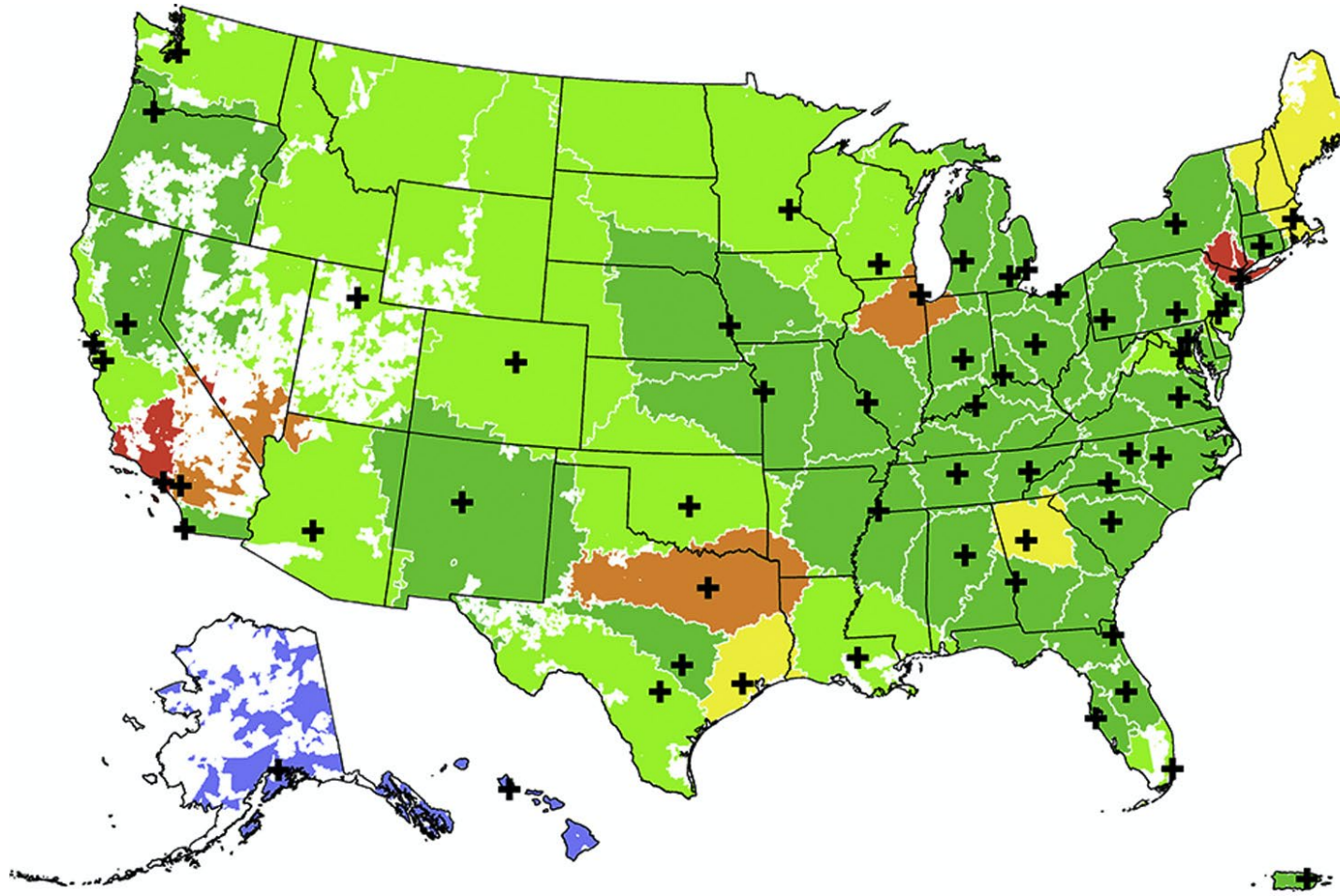
Inpatient discharges for CHD are expected to increase by 5.80% over the next decade, with most of this growth seen in adults aged 65 and older.



1



# Regional Center of Excellence



# Life-saving Excellence

- One of 9 “very high survival” ratings in US
  - **Only one in the region (US News)**
- Top performance in the region
- Rankings expected to rise when transplant program is fully established
- Significant contributions to national research

**Live-saving results – Mortality rate less than half of expected**

**4.7%** expected mortality rate ➡ **2.3%** observed mortality rate



# What Really Matters - Amelia



oklahoma.childrens • [Follow](#)



oklahoma.childrens Meet our June Kid with Heart ❤️ — Amelia, who has been at Oklahoma Children's Hospital OU Health Heart Center since she was just 6 days old and was postnatally diagnosed with hypoplastic left heart syndrome. She recently underwent her second open heart surgery with pediatric cardiothoracic surgeon Harold Burkhart, M.D., and she did great! Her family is thrilled to welcome her back home soon!

12w



joni.vaughan.31 This is the perfect shirt for this sweet angel. She has an Army of loving family, friends and medical providers to support her through this journey. ❤️💕



12w Reply



faithhelmerich ❤️❤️❤️



12w Reply



riley.e.metzger The strongest girl I know



12w Reply



Liked by carriebforokc and 371 others

June 27

# What Really Matters - Timmy



oklahoma.childrens • [Follow](#)



oklahoma.childrens Meet our September Kid with Heart ❤️ — Timmy, a tough 4 year old born at Oklahoma Children's Hospital OU Health with Hypoplastic Left Heart Syndrome. He underwent his first surgery just three days after birth, his second at around 15 months old, and recently had his third open-heart surgery performed by pediatric cardiothoracic surgeon Dr. Harold Burkhardt, M.D. He did great with the surgery and is recovering well at home!

21h



Liked by k8schafstall and 151 others  
21 hours ago



# Where We Stand

- Established as the pediatric heart surgery program for the state
- Growth in transplant, adult congenital and improved survival of single ventricle patients
- Patients are currently spread out across 5 different units
- Dated facility, infrastructure and equipment

**State must plan now for additional growth.**

# Benefits of Investment

- All cardiac care in one place, ease of navigation, patient/family satisfaction
- State-of-the-art facility and equipment
- Attract top talent (clinical, education and research)
- Improved quality and outcomes
- Keep Oklahoma patients in Oklahoma (including transplants)

# Estimated Project Scope

- 1 Hybrid OR, 2 OR's + 1 shelled OR with Pre & Post Op Spaces
- 5 Imaging Suites (1 MRI, 1 CT, 1 Fluoro, 1 Ultrasound, 1 X-Ray)
- 4 Cath Labs
- 11 Diagnostic Cardiology Suites (4 Echo/Ultrasound, 5 Echo, 1 EKG/Ultrasound, 1 Exercise Testing)
- 90 Total Pediatric Inpatient Beds
  - 15 Transplant/VAD
  - 15 Cardiac NICU
  - 15 Cardiac Medical ICU
  - 30 Cardiac Surgical ICU
  - 15 Adult Congenital
- Satellite Spaces (Pre-Admit Testing, Lab, Pharmacy, Supply Chain, Linen, EVS, Facilities)
- Heart Center Clinic
- Office & Research Space

**PHASE 1:**

LEVEL 01 LOBBY / PATIENT SUPPORT  
LEVEL 02 NICU (15 BEDS) /  
PICU (15 BEDS- SHELLED)  
LEVEL 03 SURGERY / CATH/ IMAGING  
LEVEL 04 CVICU (15 BEDS)  
LEVEL 05 CVICU (15 BEDS)  
LEVEL 06 - LEVEL 08 SHELLED

**PHASE 2:**

LEVEL 01 DIAGNOSTIC IMAGING  
PRE ANES. TESTING CLINIC / HEART CLINIC  
LEVEL 02 PICU (15 BEDS)  
LEVEL 06 MED/SURG UNIT (15 BEDS)

**PHASE 3:**

LEVEL 07 MED/SURG UNIT (15 BEDS)  
LEVEL 08 OFFICE & RESEARCH

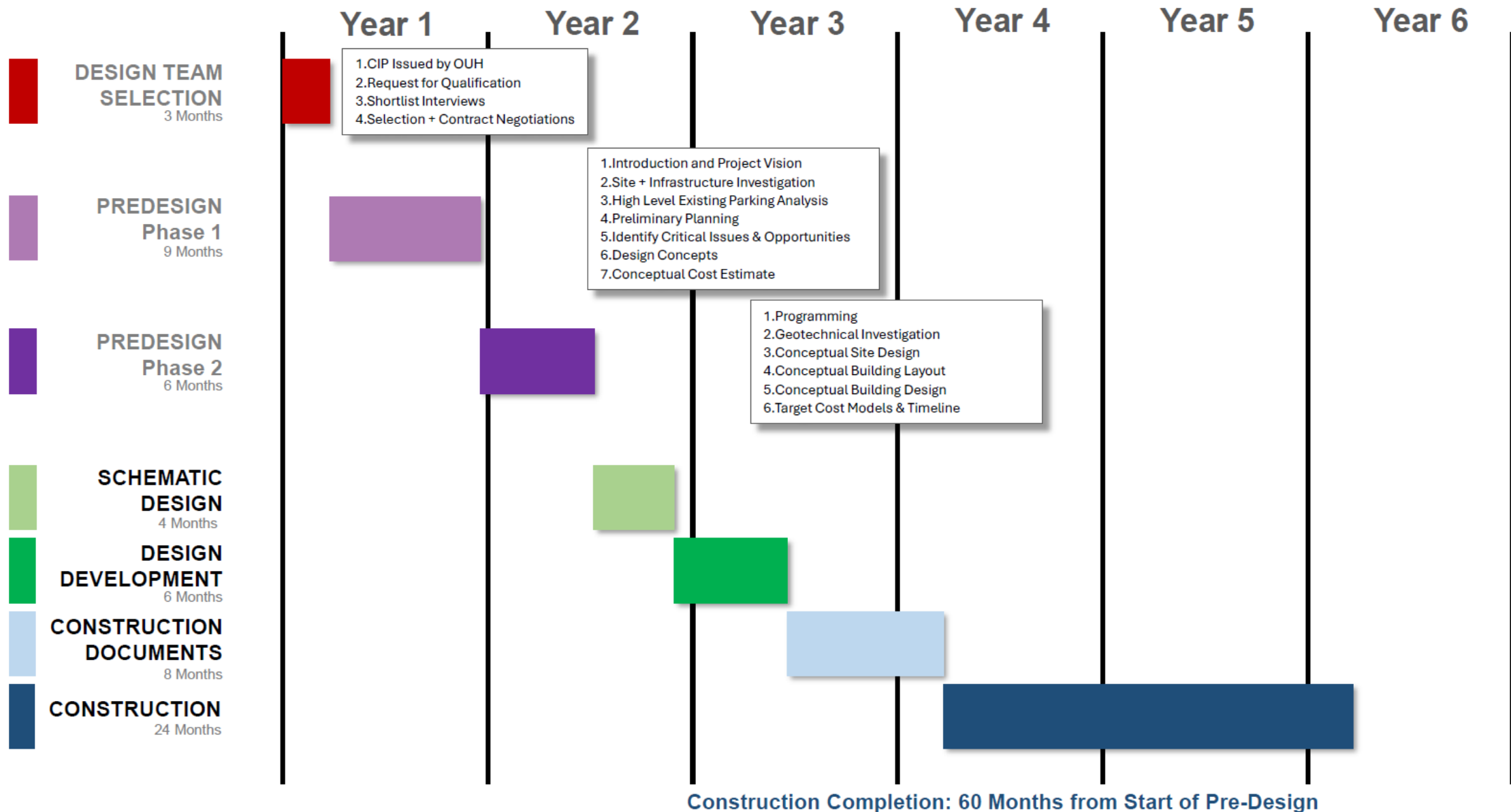
**PHASE 4:**

LEVEL 09 - 10  
EVALUATE CLINIC NEEDS  
BUILD UP TO ACCOMMODATE GROWTH



# HEART HOSPITAL

## DESIGN + CONSTRUCTION TIMELINE BY YEAR





# Estimated Project Budget

Project Element	Estimate
Construction (200,500 sq ft at \$800/sq ft.)	\$160,400,000
Furniture, Fixtures & Equipment	\$30,075,000
Soft Costs (Design, Preconstruction, Commissioning, Permits, etc.)	\$48,000,000
Construction Cost Escalation	\$19,300,000
Contingency (15%)	\$36,225,000
<b>Total</b>	<b>\$294,000,000</b>

\*Design process will be necessary to truly estimate project budget. This is an estimate based on square footage.

# Proposed Funding

Funding Sources	Estimates
Bond Issue or Appropriations via UHAT	\$250,000,000
OU Health and Private Donations	\$44,000,000
<b>Total Funding</b>	<b>\$294,000,000</b>

# Legislative Request

As the 100th anniversary of the State's first commitment to building a children's hospital nears, we ask the State to make an investment that will catapult Oklahoma Children's Hospital on the path of world class care for the next 100 years.

The state's ability to fund debt service through the University Hospitals Authority at \$20 million per year would allow Oklahoma Children's Hospital to develop the facilities for this key program and become one of the premier pediatric heart centers in the United States while ensuring Oklahoma families do not have to leave the state of Oklahoma to receive this critical care.

Term (Years)	20 Years
Par Amount	\$250 million
Average Annual Debt Service	\$20 million