

Invasive Woody Species Control



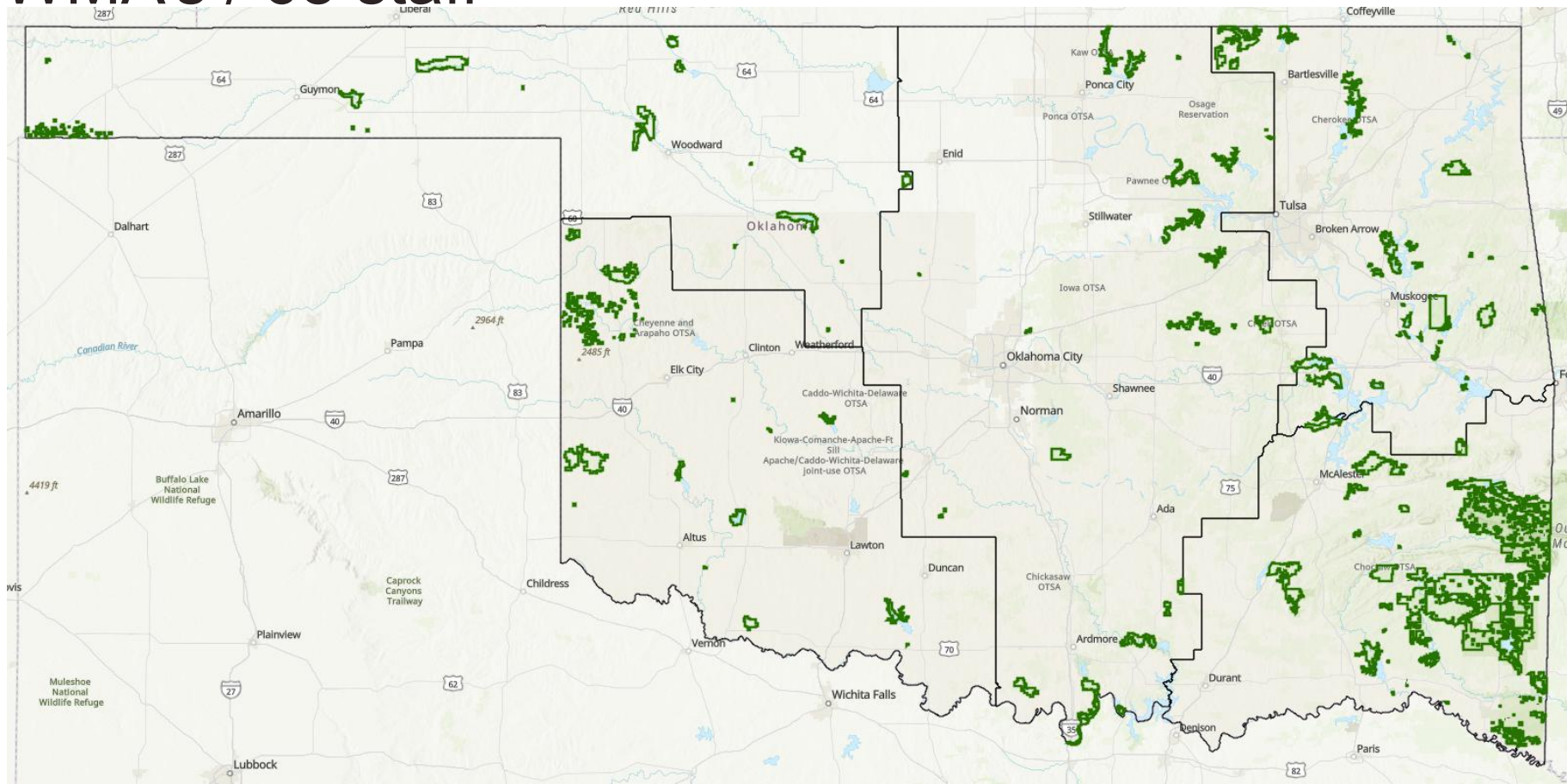
Presented by: Scott Parry, Assistant Chief of Wildlife
Oklahoma Department of Wildlife Conservation

Department Managed Lands in Oklahoma

- 1,360,150 acres – Statewide
- Approximately 90 Wildlife Management Areas
 - Owned (371,475 acres)
 - Licensed / Agreement (727,373 acres)
 - Leased (271,478 acres)

Department Managed Lands

- 1.36 million acres across the state
- 90 WMA's / 68 staff



Targeted Annual Accomplishments

- ❑ Wildlife Management Areas
 - ❑ Prescribed Fire - 150,000 acres
 - ❑ Mechanical Treatment - 10,000 acres
 - ❑ Chemical Treatment - 5,000 acres
- ❑ Private Lands Program
 - ❑ Wildlife Habitat Improvement Program
 - ❑ Landowner cost share available
 - ❑ Additional cost share programs

Purpose

- ❑ Improve Wildlife Habitat
- ❑ Control Invasive Woody Species
- ❑ Restore / Reclaim / Manage Wild Turkey Roost Sites
- ❑ Improve Watershed and Riparian Areas
- ❑ Potentially Reduce Wildfire Impacts

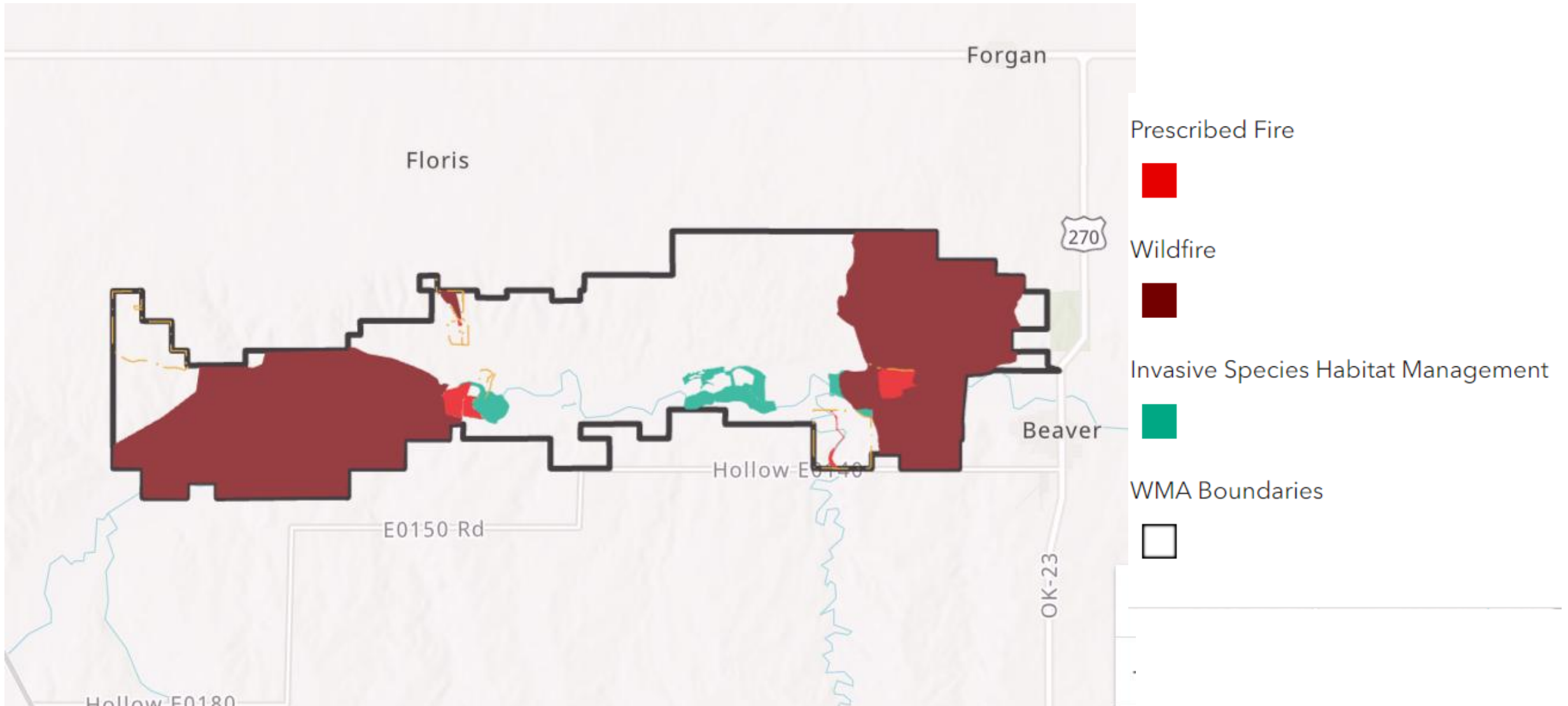
Riparian Cedar Work



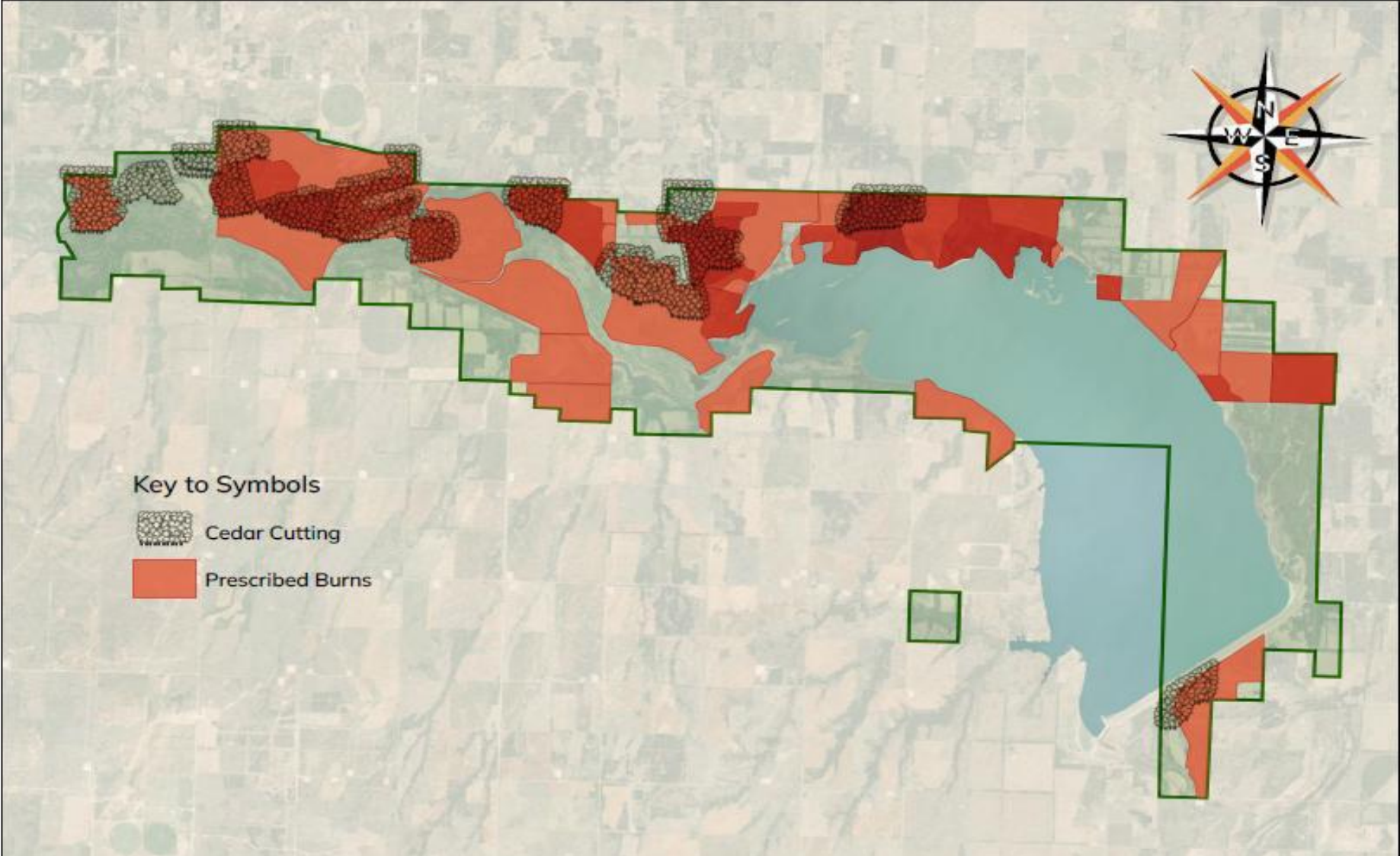
Salt Cedar Work



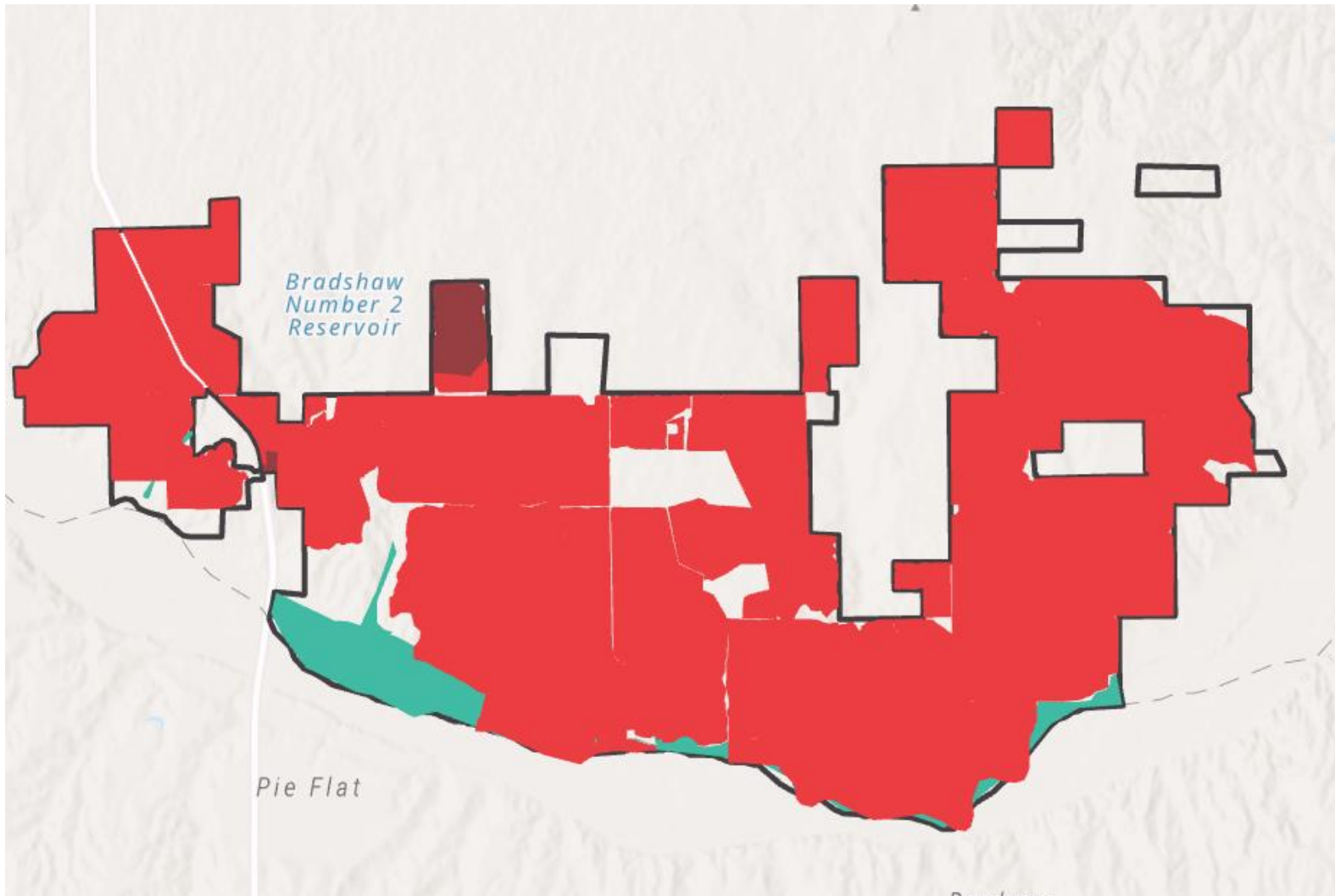
Beaver River WMA



Canton WMA



Packsaddle WMA



Prescribed Fire



Wildfire



Invasive Species Habitat Management



WMA Boundaries



Challenges

- ❑ Funding (non-federal match)
- ❑ Personnel
- ❑ Setting up contracts / monitoring work
- ❑ Weather / burn bans
- ❑ Compliance issues

