

Adult and Family Services Programs and Services



OKLAHOMA
Human Services



A close-up photograph of a young girl with dark skin and braided hair, wearing a purple shirt. She is smiling and holding a red apple to her mouth, about to take a bite. The background is blurred, showing other people in a group setting.

What is SNAP?

Supplemental Nutrition Assistance Program (SNAP) provides food benefits help low-income families and individuals supplement their food budgets. The benefits are 100 percent federally funded through the U.S. Department of Agriculture and regulated through the Food and Nutrition Service.

- Families received SNAP: 457,297
- SNAP Participants: 934,156
- Most recipients are children, older adults, and individuals with disabilities including disabled military veterans.
- Eligible participants receive SNAP benefits once a month on a EBT card.





What determines SNAP eligibility?

- Must complete application, interview and provide verifications to determine eligibility.
- SNAP participants must be US citizens or non-US citizens legally in the US in qualified status.
- Must meet income requirements by household size 130% of the federal poverty line.
- Must comply with SNAP work requirements.
- SNAP eligibility also considers other eligibility factors such as identity, household size, resource limits, state residency, and allowable deductions for expenses like housing, dependent care, and medical costs for elderly or disabled members.



What is TANF?

TANF program is a federally funded, time-limited assistance program designed to support low-income families with children when parents or caregivers cannot meet the family's basic needs. TANF provides temporary cash assistance to help families cover essential expenses while they work toward self-sufficiency. In addition to financial support, the program connects participants with services such as job training, education, and employment resources to promote long-term economic stability.

- Families received TANF: 3,524
- TANF Participants: 7,513
- Child Only Cases: 2,727
- Required Registrants: 797
- 185% of the Poverty Line



What is Child Care Subsidy ?

Child Care Subsidy Program helps low-income families pay for child care while parents or guardians work, attend school, or participate in training programs. Subsidies are paid directly to licensed providers, covering children from birth to age 13, and up to 19 for children with disabilities. The amount of assistance is based on household income, and families may be required to contribute to the costs. AFS staff determine eligibility.

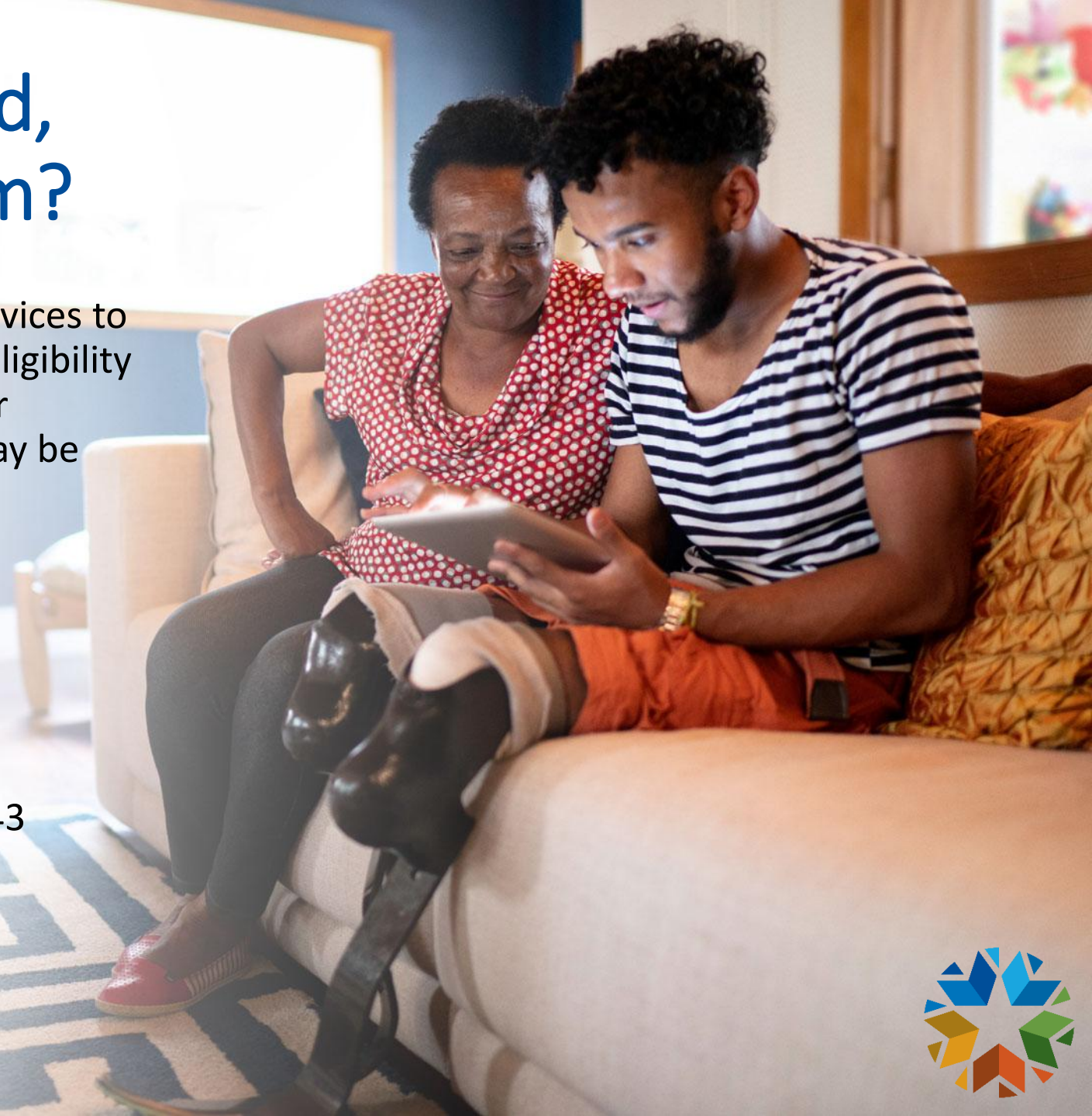
- Family with Child Care Subsidy Services: 24,493
- Children in Child Care Subsidy: 41,051
- 85% of State Medium Income (SMI)



What is the Aged, Blind, Disabled (ABD) Program?

This Program provides SoonerCare (Medicaid) services to aged 65+, blind and disabled persons who meet eligibility criteria. AFS determines the financial eligibility for Medicaid. In some instances, these individuals may be eligible for a small cash assistance payment, State Supplemental Payment (SSP) and assistance with their Medicare Premium cost.

- Blind or Disabled Children: 19,315
- Aged, Blind or Disabled Adults: 148,367
- State Supplement Payment Participants: 88,343






What is Long Term Care?


Long Term Care through Medicaid is a needs-based healthcare program that covers the cost of long-term care for seniors and disabled individuals who meet the state's eligibility requirements. These services include home and community-based waiver programs and nursing facility care. AFS staff determines financial eligibility for LTC services.


- Members residing in a Long-Term Care Facility: 14,304
- Members enrolled in Home & Community-Based Services (HCBS) Waivers: 29,158
- Members enrolled in Program of All-Inclusive Care for the Elderly (PACE): 792




How do Oklahomans apply for benefits?

 OKDHSLive.org provides 24/7 access to applying online.

 By phone using the DHS Contact Center Line 405-522-5050.

 41 OKDHS offices where people can apply in person. [DHS Office Locations \(oklahoma.gov\)](https://oklahoma.gov/okdhs/library/calendarmobile.html)

 AFS Mobile Office - Visit the link for the mobile office calendar <https://oklahoma.gov/okdhs/library/calendarmobile.html>



THANK YOU!



OKLAHOMA
Human Services

