

Oklahoma   
Children's Hospital

 Health

# ARPA Funds Request

University Hospitals Authority

Dec. 3, 2021

# Statutory Mission – UHAT/OCH

*Patient care, education, research*

- State's largest number of providers of pediatric care (400+) in approximately 50 specialties
- See patients from all 77 counties and all 50 states
- Leading health care workforce development facility in the state
  - Largest physician program
  - Largest provider of nursing graduates
- Advancing medical research; improving care for all Oklahomans

# One-of-a-Kind Care

*Oklahoma Children's Hospital*

- Only comprehensive, freestanding pediatric hospital
- Only Level 1 pediatric trauma center
- Only Level IV neonatal ICU (NICU)
- Only dedicated neonatal ground and air transportation
- Only pediatric transplant program
- Only pediatric cardiovascular ICU (CVICU)
- Only pediatric chronic dialysis unit
- Only pediatric comprehensive cancer center



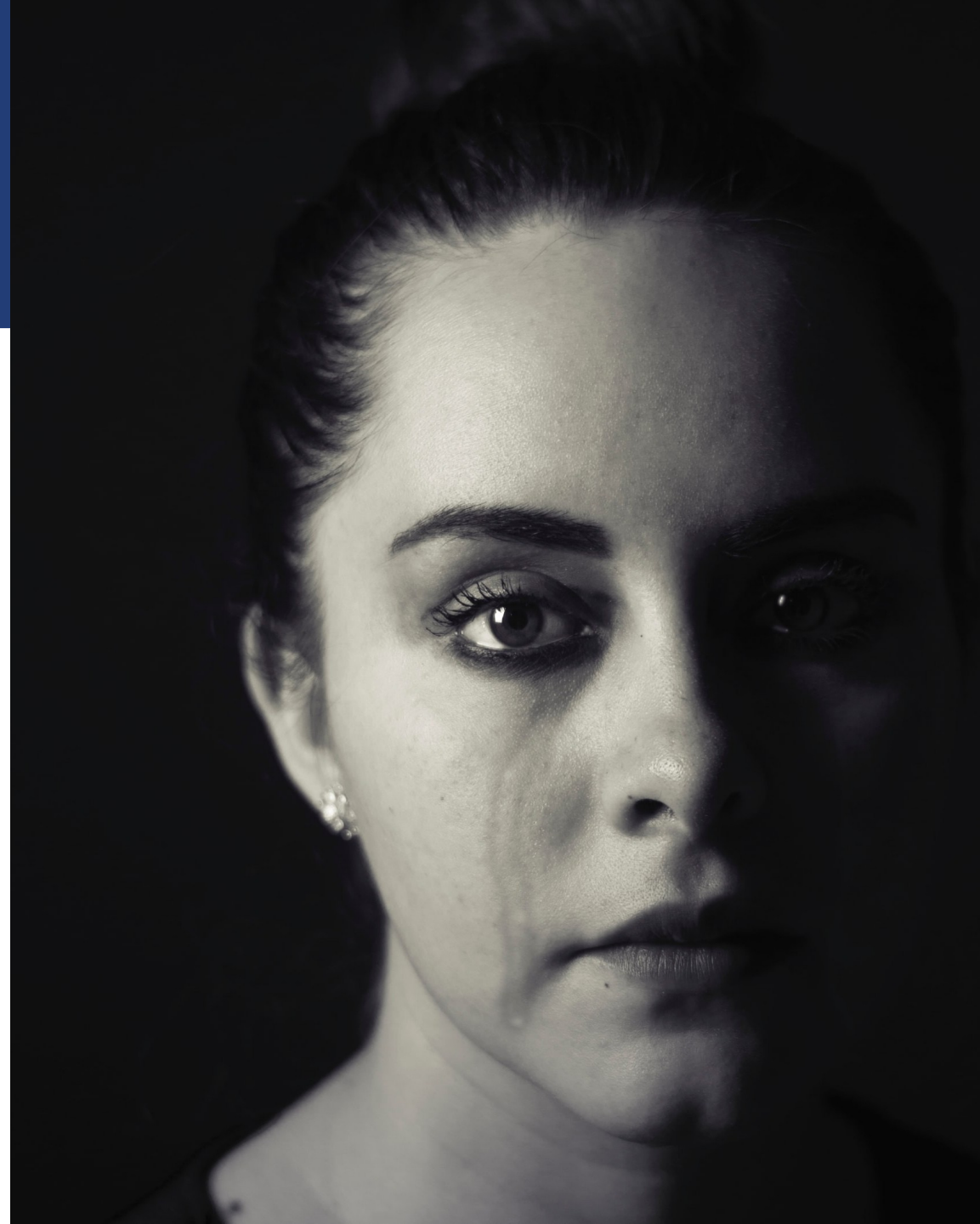
# Children's Hospital

## *By the Numbers*

- 348 total beds
- 96 NICU beds
  - 1,200 admits annually; 30% are transfers
- 59 PICU beds
  - 1,360 admits annually; state's largest facility
- 60,000 Emergency Dept. visits
- 14,000 inpatient admits annually
- 9,000 pediatric surgeries
- 3,700 deliveries a year

# Pediatric Mental Health Crisis

- At least 20% of children/adolescents need mental health care
  - 50-60% do not receive needed care
- Suicide is second leading cause of death for ages 10-19
  - Oklahoma in Top 10 for youth suicide
  - Suicidal teens are seen every shift
- Pandemic increased the need for behavioral health care dramatically
  - Children's saw 31% increase in cases by October 2020; doubled by May 2021



# The Statewide Vision

*Changing lives with a world class behavioral health program*

- 1 Become state's leading health care center addressing growing pediatric mental health care challenges across continuum of care
- 2 Deliver state-of-the-art behavioral health care by leveraging research and educational opportunities
- 3 Grow a team of caregivers who reduce stigma around mental health care
- 4 Increase capacity to treat patients from across the state through expanded facilities and use of technology
- 5 Local communities through expanded workforce development and continuing medical education



# Seven Critical Areas

1. Safe, specialized emergency care
2. Short-term stabilization
3. Longer-term care
4. Intensive outpatient (IOP) and partial hospitalization program (PHP)
5. Collaboration with other providers via telehealth
6. Comprehensive, evidence-based therapy
7. Ongoing patient and family support



# Current Emergency Dept. Concerns

- Current Emergency Dept. total volumes increased 10% over pre-pandemic numbers
- Typical Emergency Dept. room has 30+ ligature points which pose suicide/harm risk for patients in mental health crisis
- Due to shortage of pediatric inpatient psychiatric beds, these patients often have 48+ hour length of stay
- Main Emergency Dept. is heavily utilized, creating a busy, noisy environment not conducive to mental health crisis stabilization



# Emergency Dept. Expansion

- Adds ~6,400 square feet; 10 additional beds
- Flex rooms to accommodate both medical/surgical and mental health emergencies
- Allows more efficient use of space and frees up resources for medical/surgical patients
- Sensory playroom equipped for neurobehavioral/autism patients
- Enhanced technology to aid in patient stabilization
- Shower space for patients with longer length of stay
- Ample patient belonging storage space outside of patient rooms
- Direct access to vehicle sally port to transport to/from new Behavioral Health Center

- Each room will be anti-ligature:
- ✓ Coiling shutter door to conceal equipment and items of risk
  - ✓ Hard deck ceiling
  - ✓ Reinforced, mesh wall protection
  - ✓ Ligature resistant fixtures (faucets, doors, furniture)
  - ✓ Tamper resistant outlets & screws



# Emergency Dept. Floorplan



# Emergency Dept. Project Timeline

*Programming will continue  
throughout entire project.*

- Feb. 2022  
*Design process complete*
- March 2022  
*Construction begins*
- March 2023  
*Project completion*



# Emergency Dept. Workforce Timeline

- 1 Clinicians – recruiting early 2022  
*Pediatricians, psychiatrists, NPs, LCSWs*
- 2 Leadership – recruiting late 2022  
*Charge nurses*
- 3 Clinical Staff – recruiting late 2022  
*RNs, behavioral health technicians, social workers, case managers*
- 4 Support Staff – recruiting late 2022  
*Registration, housekeeping, etc.*

# The Investment

\$7.5 million to provide:

- \$7M to renovate
- \$500K to add secure, controlled and private vehicle entrance

# The Impact

- Add 10+ Emergency Dept. beds for youth in mental health crisis
- Increase capacity for other medical/surgical emergencies, reducing the number of patients diverted out of state
- Improves the security and privacy for patients and providers

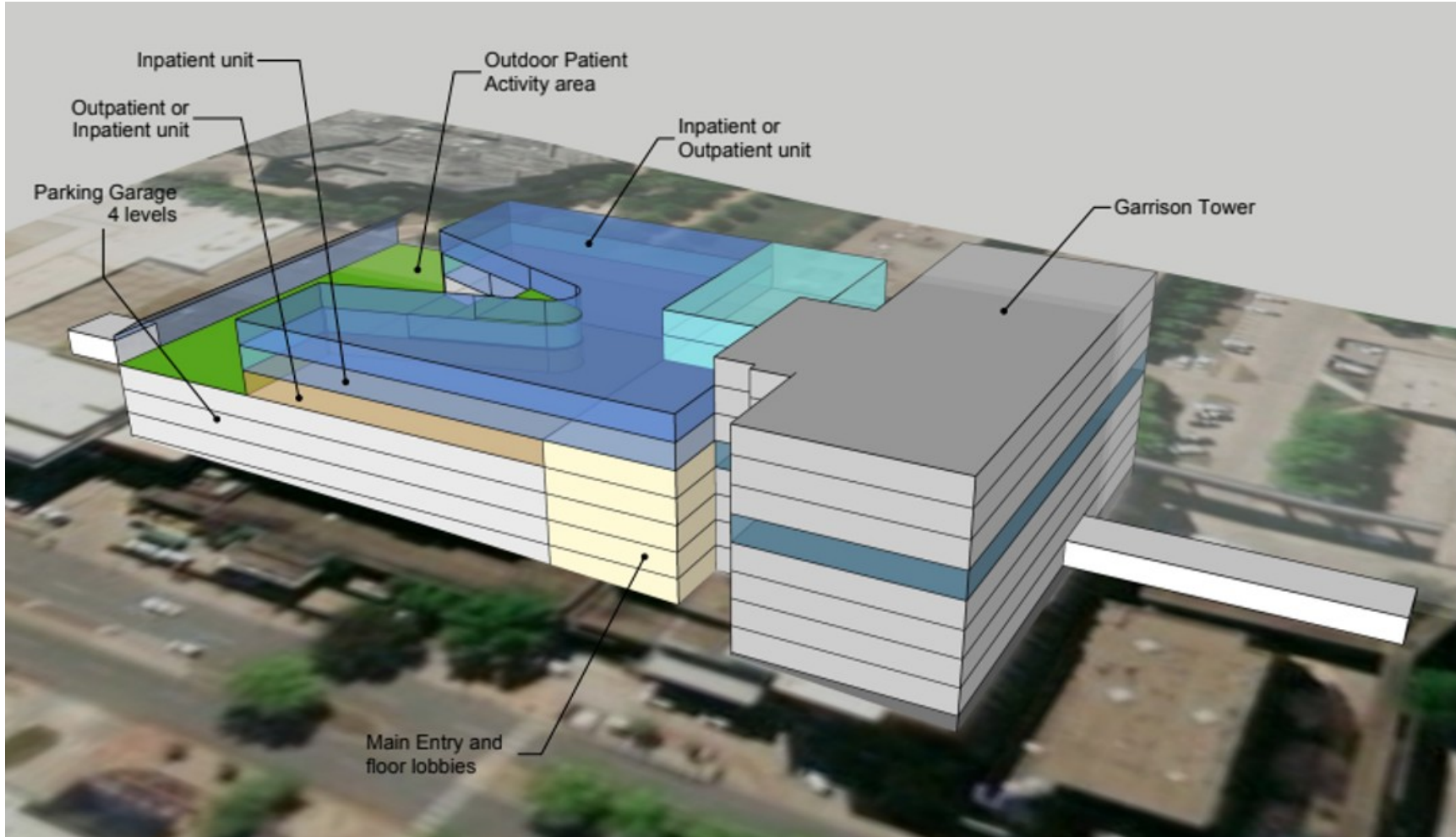
# Behavioral Health Center

## Details

*Facility will be one of a kind in Oklahoma and one of the premier facilities in the country*

- Multi-story center with approximately 72 inpatient beds
- One floor for intensive outpatient (IOP) and partial hospitalization program (PHP)
- Dedicated neurodevelopmental/autism unit
- Shell space for possible OJA/county detention unit (or other partner needs)
- Space for families to stay with children
- Two-story gymnasium, outdoor respite spaces, conference areas, family resource spaces
- Specialized environment will provide best care in an appropriate setting, freeing up beds at OCH and other facilities statewide

# Behavioral Health Center Rendering



# Partnerships

## *State Partners*

- Oklahoma Health Care Authority
- Oklahoma Dept. of Mental Health and Substance Abuse Services
- Oklahoma Juvenile Affairs
- State Dept. of Education
- Oklahoma Dept. of Human Services
- OU Health Sciences Center
  - Child Study Center
  - Center for Child Abuse and Neglect
  - Dept. of Psychology
  - College of Nursing
  - College of Medicine

## *External Partners*

- Oklahoma City Public Schools, other districts
- Statewide county detention centers
- Rural and urban hospitals and outpatient/clinical providers
- Community organizations and philanthropic entities



# The Investment

\$49.3 million to provide:

- \$19.8M in acceleration of appropriated funds
- \$29.5M to expand behavioral health services and study brain disorders

# The Impact

- Become a national leader in providing evidence-based behavioral health treatment, changing lives for patients and their families
- Relieve stress and fiscal strain on partner entities by treating health issues early; treat youth with behavioral health issues before they reach state supervision or criminal justice systems
- Create inpatient unit designed for pediatric patients with autism spectrum disorder and other developmental disabilities
- Expand state's mental health workforce

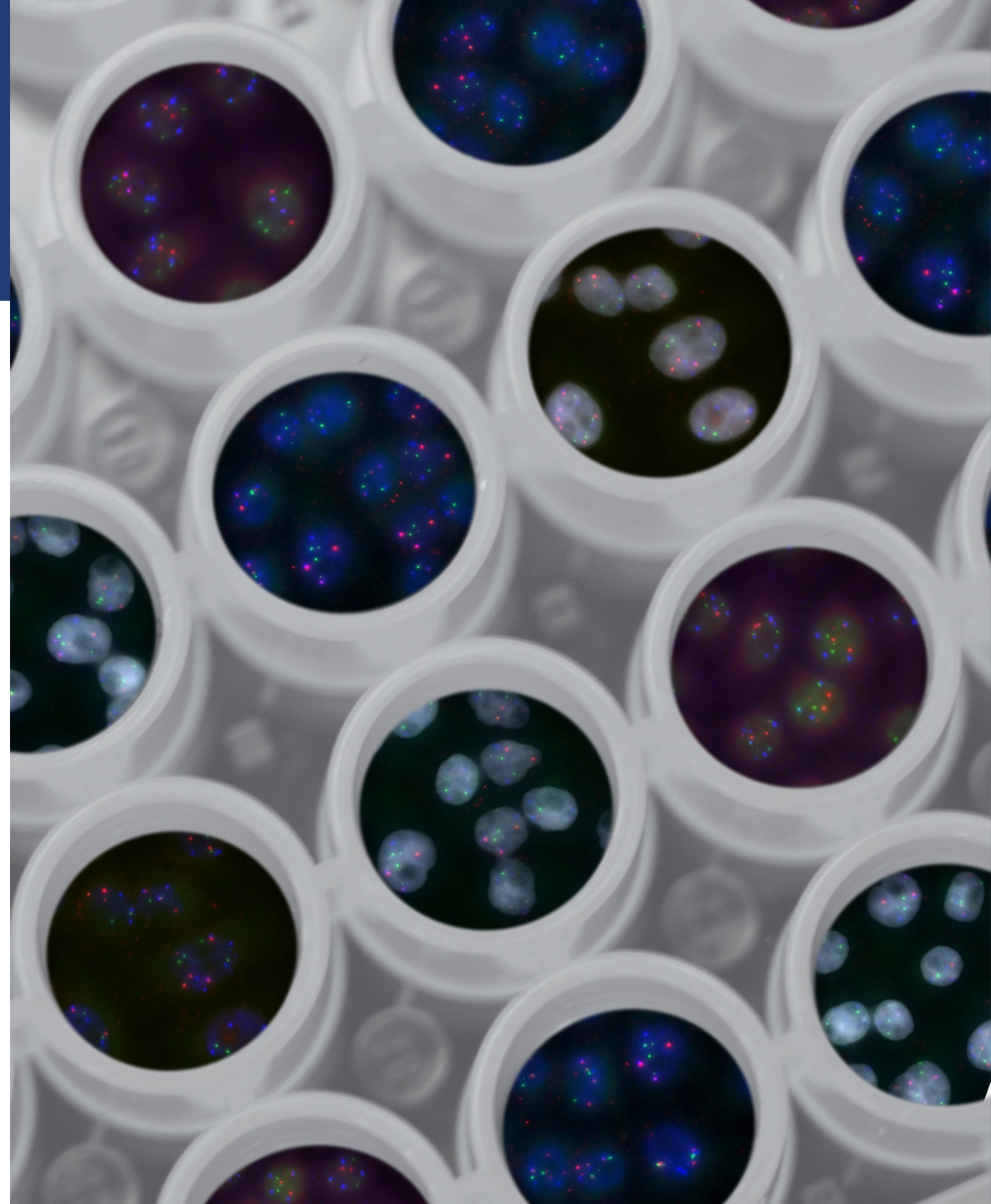
# Educational and Workforce Impact

Behavioral health care expansion will provide training and education for:

- Nursing students
- Psychiatric mental health nurse practitioner (PMHNP)
- Pharmacy students
- Clinical social work interns
- Occupational therapy students
- 3<sup>rd</sup> and 4<sup>th</sup> year medical school students
- Psychiatry residents
- Pediatric residents
- Child and adolescent psychiatry fellows
- Adolescent medicine fellows
- Psychology interns
- Neuropsychology fellows
- Autism behavior health analysts
- Physician assistants and other advanced practice providers

# Research Impact

- Attract grant money
- Provide access to newer, more-specific treatments which may not be available or covered by insurance otherwise
- Allow doctors and students to conduct groundbreaking research
- Enhance institutional reputation, retain graduates and physicians, attract new talent to enhance access to and quality of care



# Behavioral Health Center Timeline

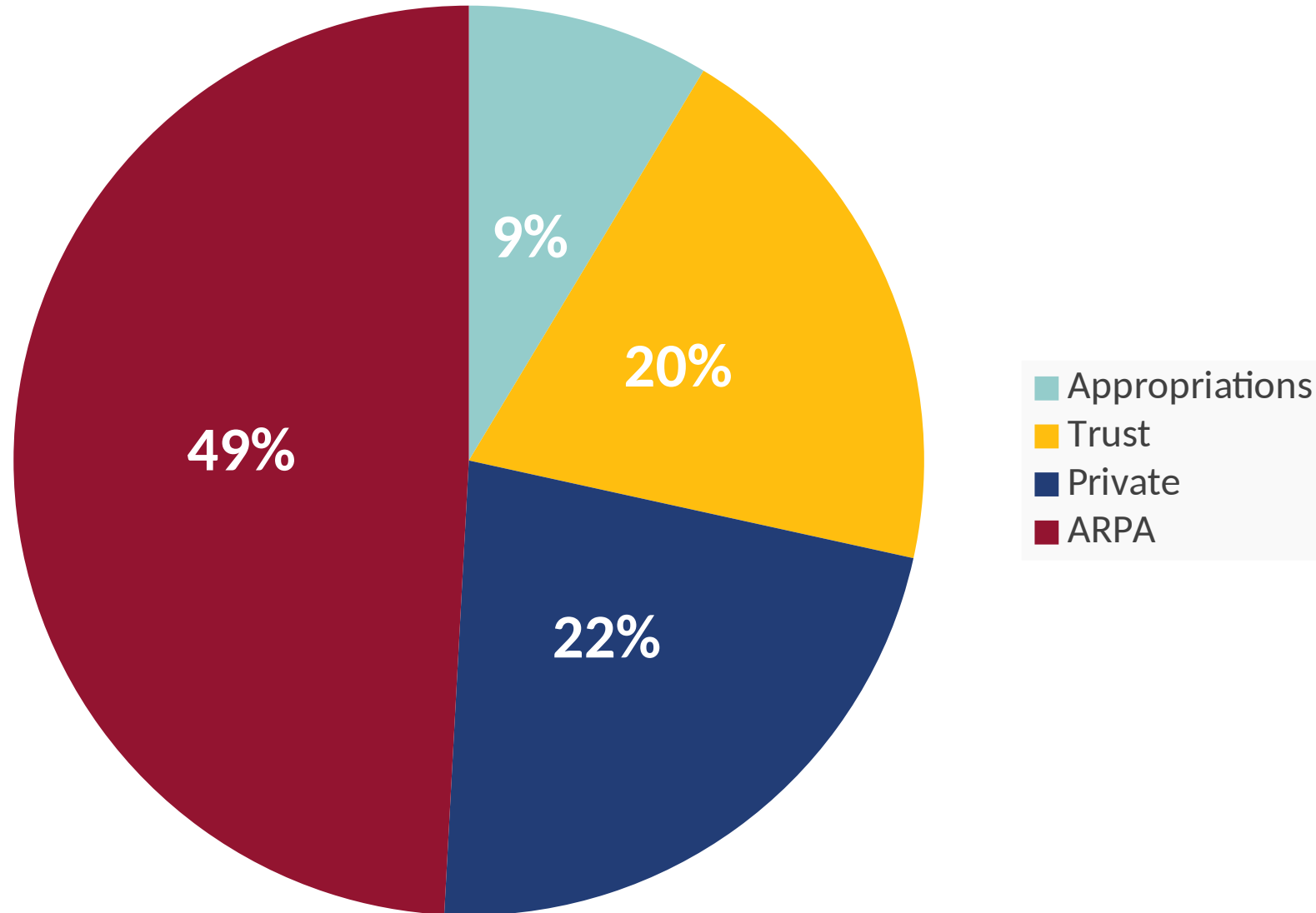
*Programming will continue  
throughout entire project.*

- Winter 2022  
*Remediation begins*
- Spring/Fall 2022  
*Structural demolition*
- Fall 2022  
*Construction documents received*
- Winter 2023  
*Construction commences*
- Winter 2025  
*Fully operational*

# Behavioral Health Center Workforce Timeline

- 1 Clinicians – recruiting ongoing  
*Psychiatrists, psychologists, NPs, LCSWs*
- 2 Leadership – recruiting 2023  
*Directors, managers, charge nurses*
- 3 Clinical Staff – recruiting late 2024  
*Behavioral health RNs, health technicians, social workers, case managers*
- 4 Support Staff – recruiting early 2025  
*Protective services officers, clinical staff, expressive therapists, teachers, other*

# Funding Share



# Behavioral Health Center/ Emergency Dept. Funding

State Appropriations	\$10 million
University Hospitals Trust	\$23 million
Philanthropy & other partnerships	\$26 million
ARPA	\$29.5 million
ARPA (ED/Sally port)	\$7.5 million
ARPA (Appropriations acceleration)	\$19.8 million
<hr/>	
Preliminary estimated budget	<b>\$115.8 million</b>

# Bottom Line

This investment has the potential to break down barriers and forge new pathways to well-being for Oklahoma's most vulnerable children.

