



**Senate Subcommittee on
Appropriations – General
Government & Transportation**

Clinton-Sherman Airport (CSM) in Burns Flat looking south



OSIDA manages and maintains the Oklahoma Air & Space Port and Industrial Park at Clinton-Sherman Airport now the **Oklahoma Aerospace Industrial Complex!**

OSIDA Governance



- OSIDA is governed by a board of directors consisting of seven members appointed by the Governor with advice and consent of the Senate. OSIDA's Chief Executive Officer is appointed by the board. OSIDA currently operates under the Oklahoma Secretary of Commerce.

Oklahoma Space Industry Development Authority

Member Name	Appointing Authority	Appointment Date	Confirmation Date	Term Ending Date
Bailey J Siegfried	Governor	5/1/2015	5/1/2015	6/30/2023
Michael Halsey	Governor	4/26/2016	5/25/2016	6/30/2024
Ben Robinson	Governor	5/25/2016	5/13/2020	6/30/2023
P. David Gillett	Governor	5/1/2020	5/11/2020	6/30/2024
Richard Henry	Governor	4/20/2020	5/11/2020	6/30/2023
Vince Howie	Governor	4/20/2020	5/11/2020	6/30/2024
Michael Schulz	Governor	4/27/2020	5/11/2020	6/30/2023

OSIDA Origin

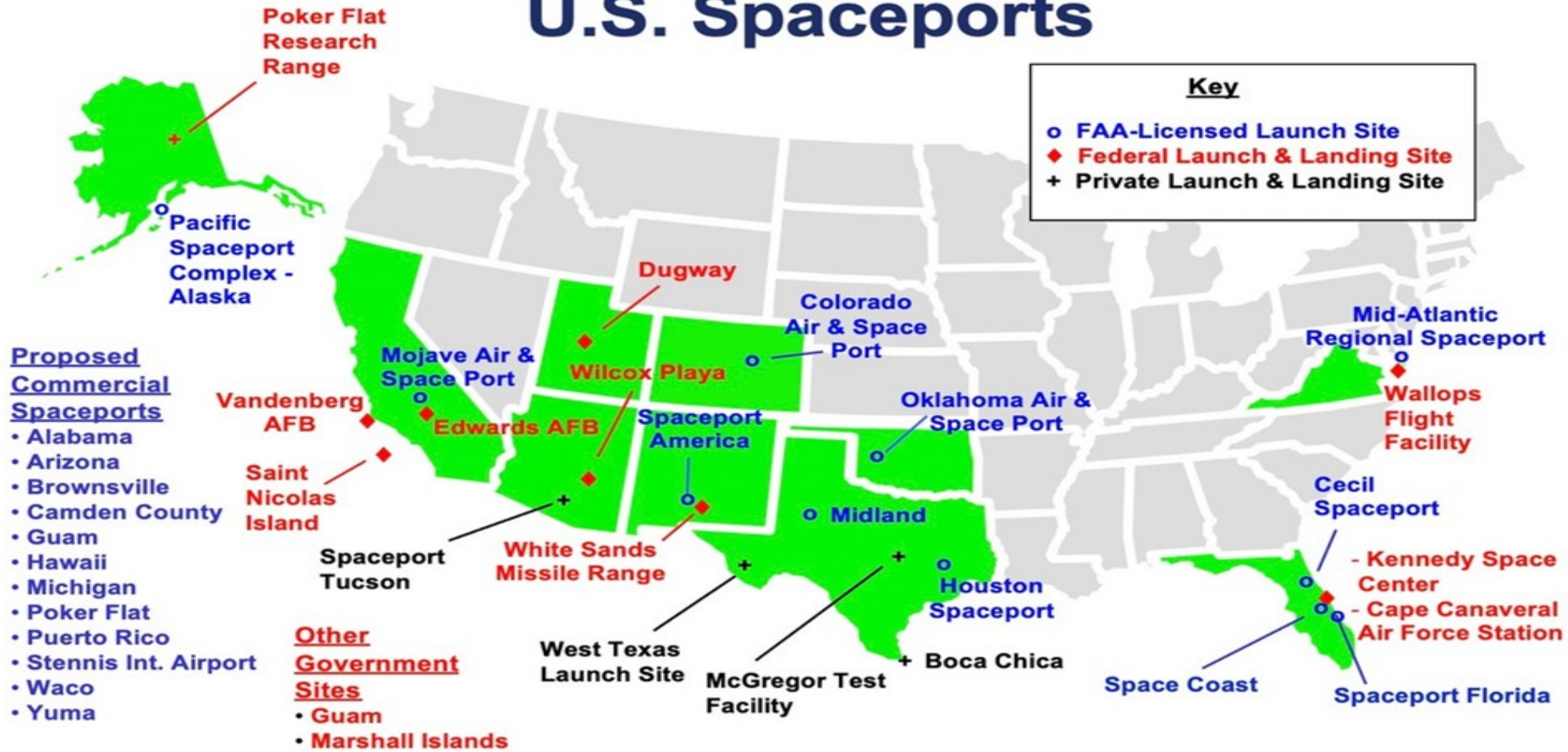


- On May 17, 1999, **Governor Frank Keating** signed the Space Industry Development Act creating the Oklahoma Space Industry Development Authority (OSIDA).
- OSIDA operates the 2,700-acre Oklahoma Air & Space Port and Aerospace Industrial Park at Clinton-Sherman Airport (CSM) in Burns Flat.
- Located 7 miles south of Interstate 40 (Route 66) approximately 100 miles west of Oklahoma City at a **former Air Force Strategic Air Command (SAC) base**.
- The wisdom of Oklahoma leaders a generation ago led to the establishment of one of the first commercial spaceports in the U.S. and **the first inland state to have one** - positioning Oklahoma near the top nationally to attract and retain long-term, high-tech jobs.
- The Oklahoma Air & Space Port qualifies as a Reusable Launch Vehicle (RLV) launch site for commercial (and Defense) polar orbits and served as an **alternate landing site for the Space Shuttle**.
- June 2006, **FAA's Office of Commercial Space Transportation** awards OSIDA a Launch Site License.

FAA Licensed Spaceports



U.S. Spaceports



OSIDA FACT SHEET:

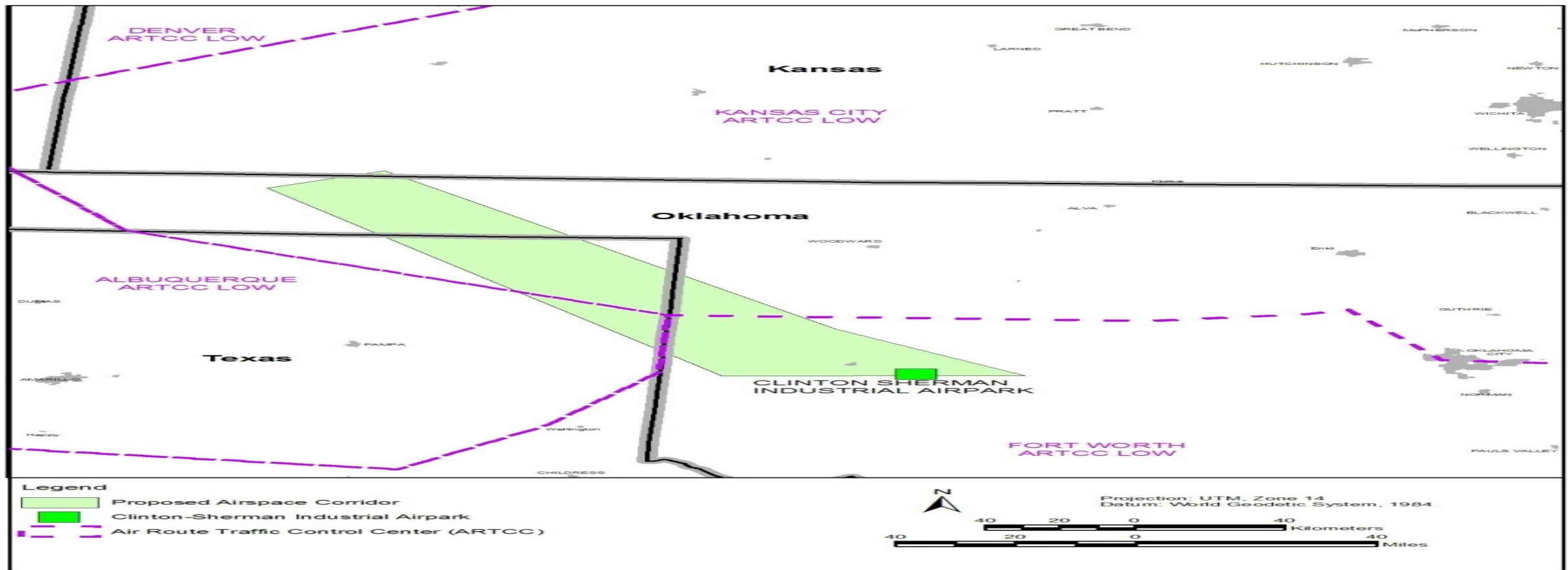


- OSIDA's Oklahoma Air & Space Port and Aerospace Industrial Park is an **aerospace industrial complex** that includes an 1,100-acre industrial park, general aviation airport*, and an FAA licensed **spaceport**.
- The Oklahoma Air & Space Port features:
 - A 13,503'X300' all weather **runway (4th largest in North America)**;
 - An adjacent 5193'x75' runway, both with ILS capability; manned **Air Traffic Control** tower; **Aircraft Rescue and Fire Fighting** unit (ARFF); six large hangars (100,000sf of covered space); and 96 acres of pavement for parking and storage all surrounded by 11+ miles of secure fencing.
 - **Operations Control Center** includes a Tracking and Monitoring (T&M) room for mission control for use during flight testing, launch, space tracking and recovery.
 - As one of **only 12 spaceports** in the nation, OSIDA designed and operates the **first U.S. inland spaceflight corridor** – the “Infinity One” (150 miles long and averaging 45 miles wide) for aerospace operations in the national airspace system **clear of military operating areas** and not in restricted airspace. The corridor provides a northwest **polar trajectory** ideal for commercial and Department of Defense suborbital launch purposes providing the most strategic and efficient way to view, travel, or deploy to, virtually every part of the world in under two hours as the Earth rotates beneath.

Spaceflight Corridor (Polar Trajectory)



The first U.S. inland spaceport with an established, approved flight corridor for space operations in the national airspace system (NAS), clear of Military Operations Areas (MOA) or restricted airspace. The corridor provides a polar trajectory with a high inclination orbit (HIO) ideal for commercial and Department of Defense launch and landing purposes as it provides the most strategic and efficient way to view, or deploy, anywhere in the world. OSIDA, working with FAA, is the controlling agency responsible for scheduling and flight ops.



OSIDA FACT SHEET:



- OSIDA maintains a long partnership with the **U.S. Air Force** through a **Joint Use Agreement (JUA)** in support of Altus and Vance AFBs military training and flight operations.
- JUA provides a 90:10 match to safely and efficiently support all airfield maintenance (runways, taxiways and ramps); **100% of Air Traffic Services and Aircraft Rescue and Firefighting (ARFF) Operations**. Upkeep includes daily operations and maintenance, ongoing runway and apron repairs and improvements totaling several million dollars since 2011.
- The facilities at the Oklahoma Air & Spaceport were key factors in the decision by the DoD to select **Altus AFB for the KC-46 Tanker Formal Training Unit (FTU)** and First Main Operating Base (MOB1).
- OSIDA also operates the adjacent **1,100-acre industrial park** which includes roads, utilities, fiber, water/sewage, buildings for lease, 7 miles of main line rail, 9-hole golf course, and medical clinic which all help **generate and support jobs** and revenue for the state and local economies.
- The industrial park is located next to **Western Technology Center** which provides job and workforce skills, training and certification with connections to more than 58 campuses statewide.
- OSIDA continues a decades long partnership with **OK Highway Patrol** for its Driving Academy/training facility and course located at the airport.

OSIDA FACT SHEET:



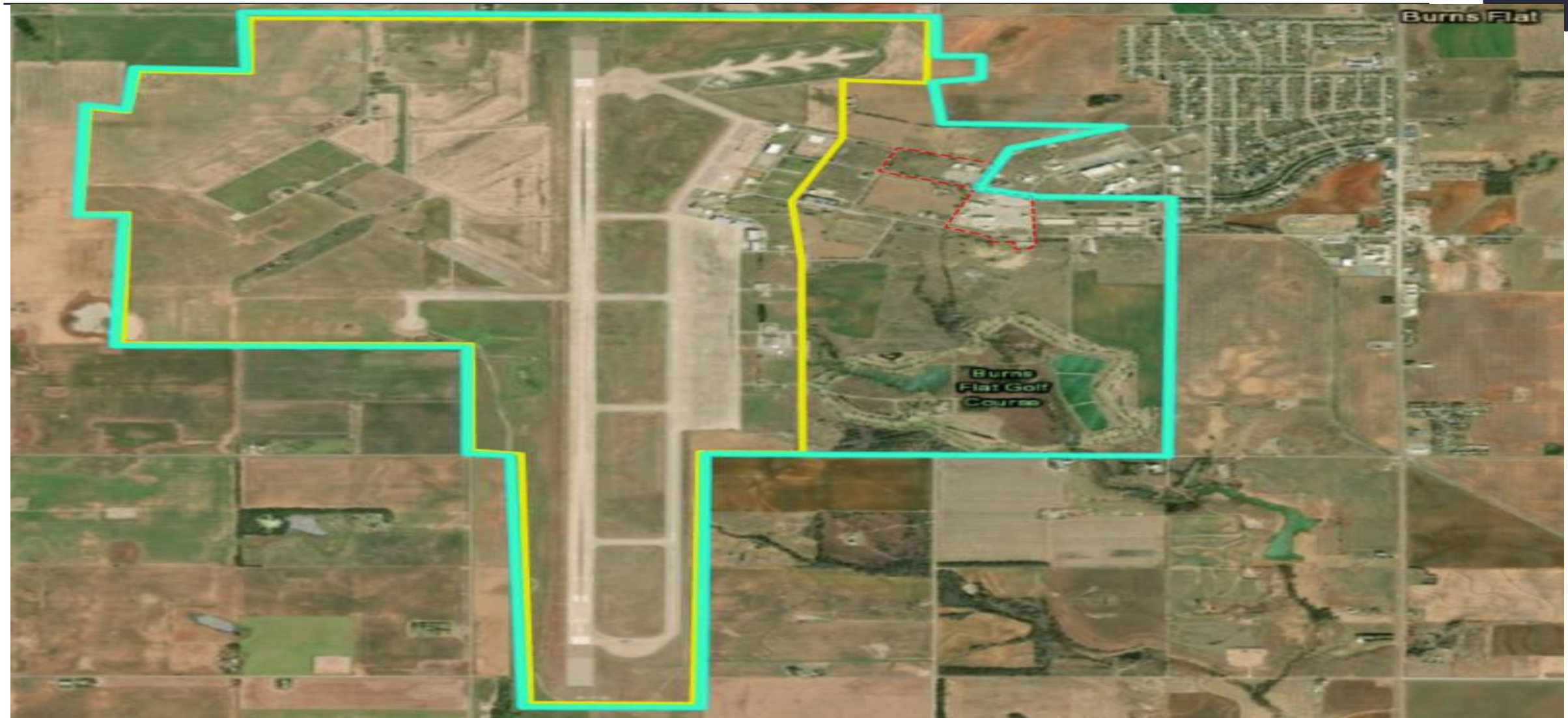
- FY 2022 state appropriation was \$400,000 (an approximately \$32,000 / 8 percent increase) of the state's \$9.06 billion state budget (.00004) to operate this nearly half \$billion 2700-acre asset with 7 FTE. Insurance through OMES spiked \$30,000 (a 57 percent increase) from \$53,000 to \$83,000 and effectively consumed most of our additional appropriation.
- OSIDA's operation supports the repair, development, and maintenance (considerable mowing) and overall management of a World War II-era facility, its **40** remaining buildings, nearly **14 miles** of streets, and other associated infrastructure which includes an impressive general use airport, **1,100-acre industrial park**, AND an FAA-licensed spaceport!
- OSIDA is one of the few state agencies that collects revenue! OSIDA tenants include the **OK Dept. of Public Safety (OHP)**; a **public health clinic**; two **manufacturing** facilities; farmer/rancher; oilfield suppliers; fireworks manufacturer; **golf course**; restaurant operator; cellular company; delivery service; **FBO provider**; and a several one-off tenants.
- OSIDA **provides water and wastewater** service to airport and airpark tenants.
- OSIDA even **provides wastewater services for the City of Burns Flat** and about **1500** of its residents/businesses.

OSIDA supplies water to the airport and industrial park



1M Gallon water tank; Pump and treatment house; water tower

Oklahoma Aerospace Industrial Complex



The Green Line encompasses the entire 2700 acres. The yellow line marks the East edge of the Industrial Park.

Boeing 777-9 arrives (1 of only 4 in existence)



10:34
 Messages
 oklahoman.com
 Home News Weather Opinion

Boeing sends newest passenger jet to rural Oklahoma airport for testing



by Dale Denwalt

Published: Wed, February 24, 2021 1:06 AM

Updated: Wed, February 24, 2021 1:30 AM



A Boeing 777-9 arrived in Oklahoma Tuesday afternoon to begin flight tests from Clinton-Sherman Airport near Burns Flat. [ROD SERFOSS/CLINTON DAILY NEWS]▲



Successful Test Flight - August 24, 2021



“Kratos Air Wolf Tactical Drone System Completes Successful Flight at Burns Flat, Oklahoma Range Facility”



Actual photo taken at Burns Flat moments before the early morning launch.

“Air Wolf Tactical Drone System completed a 100 percent successful flight at the recently approved Burns Flat, Oklahoma Range Facility (Oklahoma Air and Space Port). The Kratos Air Wolf Mission, which was the inaugural flight at the Burns Flat Range location, included multiple new payloads carried by the Air Wolf Drone, including a proprietary Kratos artificial intelligence/autonomy system, which has been developed by Kratos specifically for high performance, jet drone aircraft.”

"The vision of the Oklahoma Spaceport in Burns Flat to become a center of commercial aerospace and spaceflight programs moved one step closer with the historic first Unmanned Aircraft System and Unmanned Aerial Vehicle launch," noted Bailey J. Siegfried, Chair of the Oklahoma Space Industry Development Authority #OSIDA. "We congratulate our friends at Oklahoma-based Kratos Defense and Security Solutions on this safe and successful launch and flight. We are eager to strengthen our ties with #Kratos to support our mission to advance our robust aerospace and space economy in #Oklahoma."

OSIDA headquarters building (completed in 2016)



Designed to be a launch facility complete with a 40'X40' Telemetry & Monitoring (T&M) Room

11 miles of secure fencing protecting the airfield



Air Traffic Control Tower – operates 5 days a week



World War II-era Air Traffic Control Tower - original to the Naval Air Station - has 2 floors of available office space, but requires major interior repairs, bathroom remodels, upgrades in electrical wiring, a new roof and HVAC system, and an exterior paint job!



Air Force ARFF (Aircraft Rescue and Firefighting) Unit



Five concrete (nuclear grade) containment bunkers



Each 2,000sf bunker has 3' thick walls with 2" steel doors

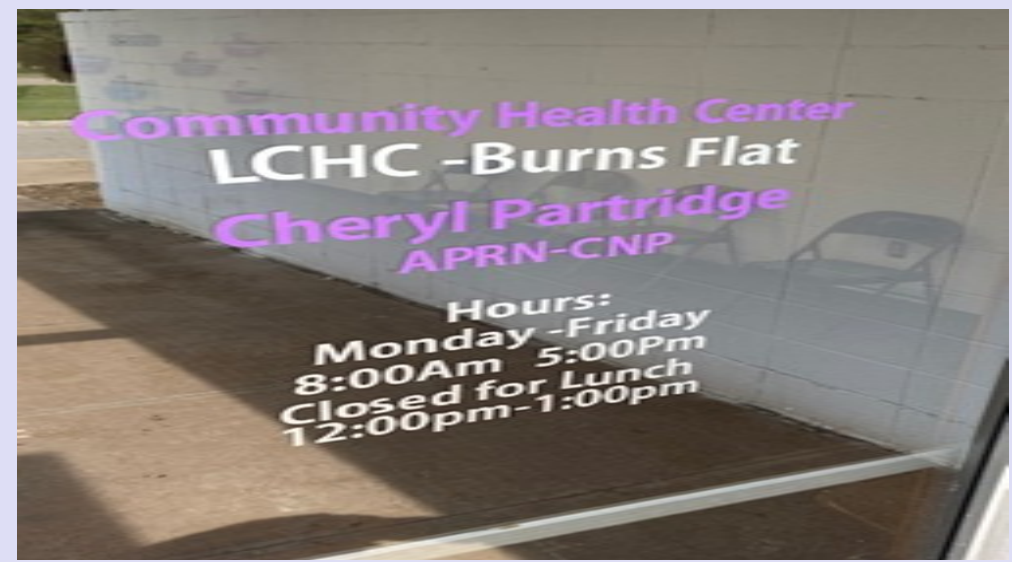
100,000+sf of hangar space



Tenant: OHP Driver Training Facility – Command Center



Tenant: Burns Flat Medical Clinic



5,000sf medical clinic operated by Comanche County (Lawton) Community Health. Just bought a new HVAC unit - \$20,000.

Looking for places to invest and develop



- More than 110 contacts and site visits in 17 months.
- **State Sen. Adam Pugh** (R-Edmond) with Maurice Compton and his team with Ready 3 – visited August 12, looking for an operations center for MRO work.

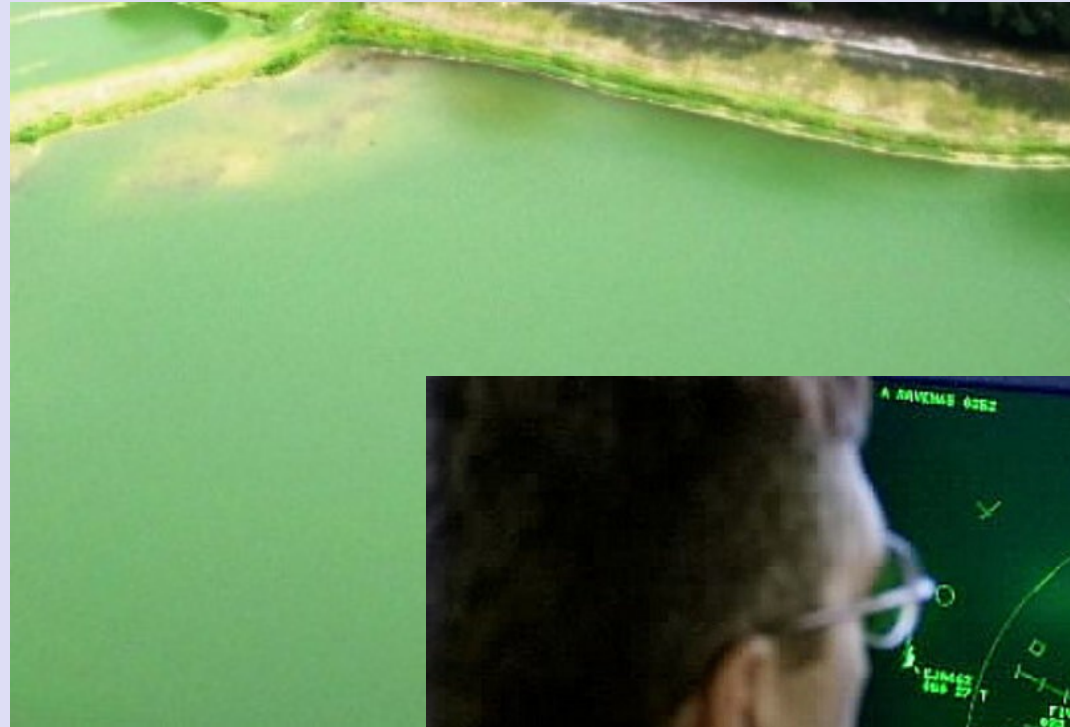
On the left edge, Sen. Pugh and Maurice Compton (khakis) and his Ready3 team.

Texas and New Mexico



- The city of Midland, Texas created the Midland Development Corporation (MDC) funded by a ¼ cent sales tax to help operate the **Midland Air and Space Port**.
 - In addition to local funding, Midland International Air & Space Port **received nearly \$27M** in Covid-related funding in 2020 and 2021.
 - The City of Midland recently approved a **\$6.7M bathroom renovation** project!
 - State of **Texas** created a **\$15M Spaceport Trust Fund** with money available for grants. Midland Air and Space Port received \$2M from this fund in 2014.
- City of Houston and the State of Texas have invested more than **\$37 million in the Houston Spaceport** to include in excess of \$4 million in federal matching grants.
- The state Legislature in New Mexico created the New Mexico Spaceport Authority and pumped in **\$220 million** toward the construction and development of **Spaceport America** located in remote, land-locked Truth or Consequences, NM.

Other Items



Contact and Social Media



Oklahoma Air and Space Port

P.O. Box 689

Burns Flat, Oklahoma 73624

Office: (580) 562-3500

Craig.Smith@spaceport.ok.gov

Cell: (580) 309-3223

AirSpaceportOK.com

Twitter: @SpaceportOK

LinkedIn: Oklahoma Air and Spaceport

Facebook: Oklahoma Space Industry Development Authority



50,000sf warehouse with rail access



Buildings in the industrial park



Some buildings are adequate and have potential.

Buildings (with improvements) can be useful



Buildings (with improvements) can be useful



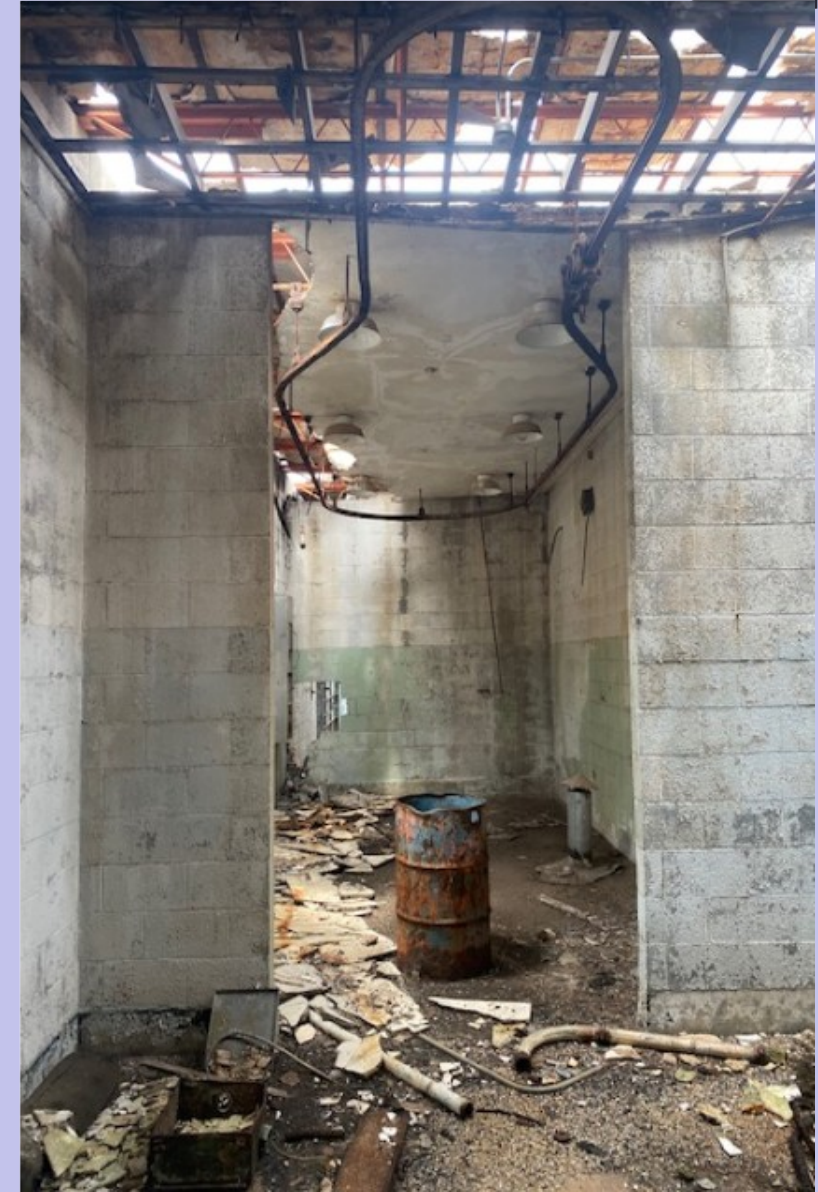
Built to manufacture ethanol – tanks fill the building.



Keep or Demolish



Needs to be demolished



Needs to be demolished



At first glance, this building appears to be repairable, then you look inside

Need to be demolished



Parking lot and loading docks along rail spur



1,000 acres available for lease and development



Oklahoma Aerospace Industrial Complex

